

X - MICRO

WLAN 11g Combo Finder Adapter

Quick Start Guide

WLAN 11g Combo Finder Adapter

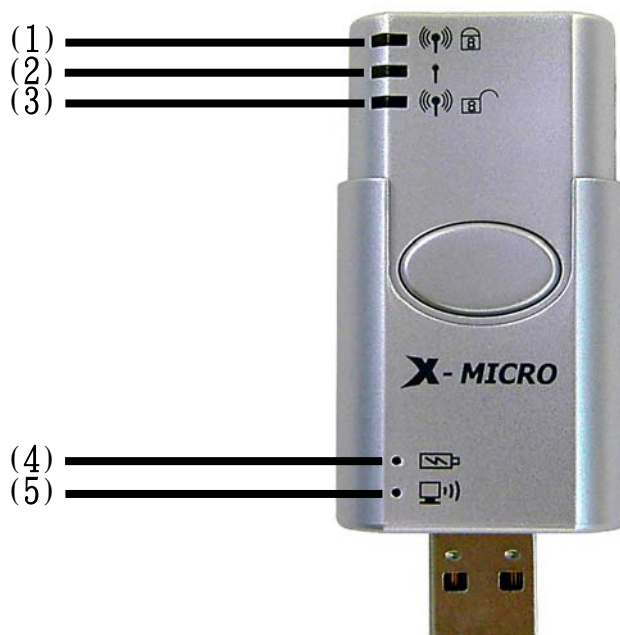
Important: Please do not connect your WLAN 11g Combo Finder Adapter to the USB port of your computer before installing the 11g WLAN utility and driver.

System Requirements

- Notebook PC or desktop PC with one free USB 2.0 port
- 32MB memory or greater
- 300MHz processor or higher
- Microsoft Windows XP / 2000 / Me / 98SE

Finder Function

Important: When the device plug in PC or NB the finder function will set to disable. Please don't use finder function when this device plug in Notebook PC or desktop PC this may cause damage to device circuit.



(1) : WLAN (Wi-Fi) detected with encryption Indicator

(2) : No WLAN (Wi-Fi) detected Indicator

(1) + (3) : WLAN (Wi-Fi) detected and without encryption Indicator

(4) : Battery Charge Indicator

(5) : Link Active Indicator

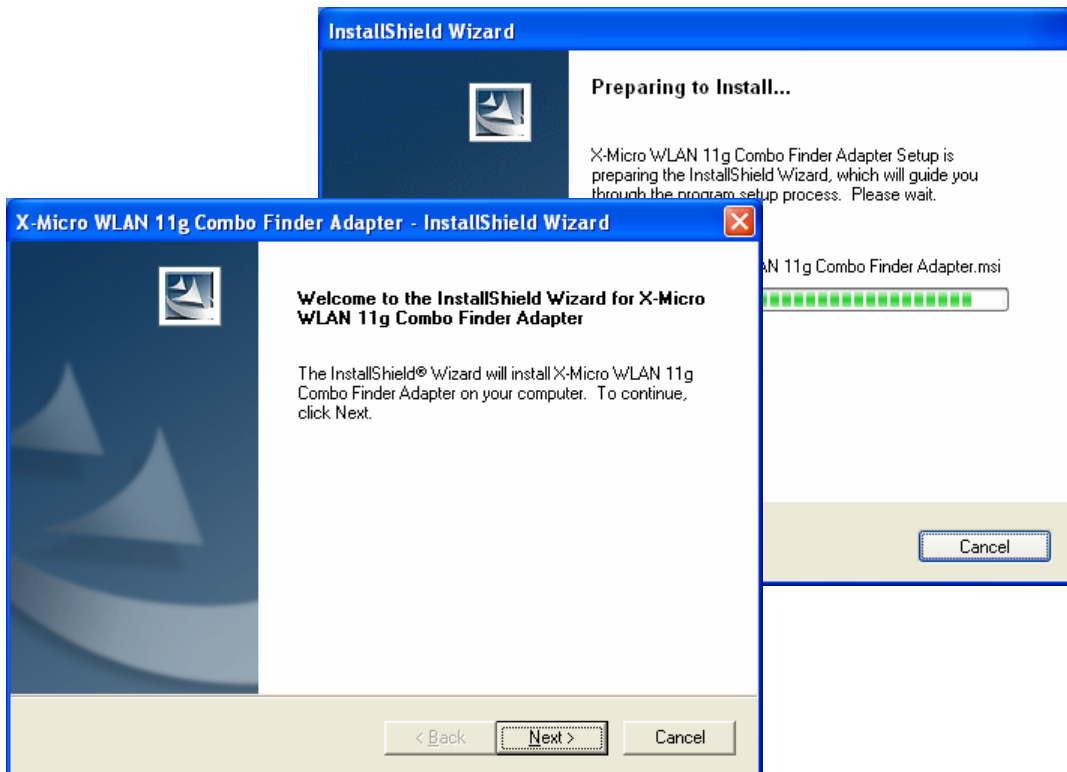
Driver installation

1. Insert the WLAN Utility and Driver CD in the CD-ROM drive and wait until the following welcome screen appears on your screen. Click [Install Driver], then the utility will auto-install in your computer system.

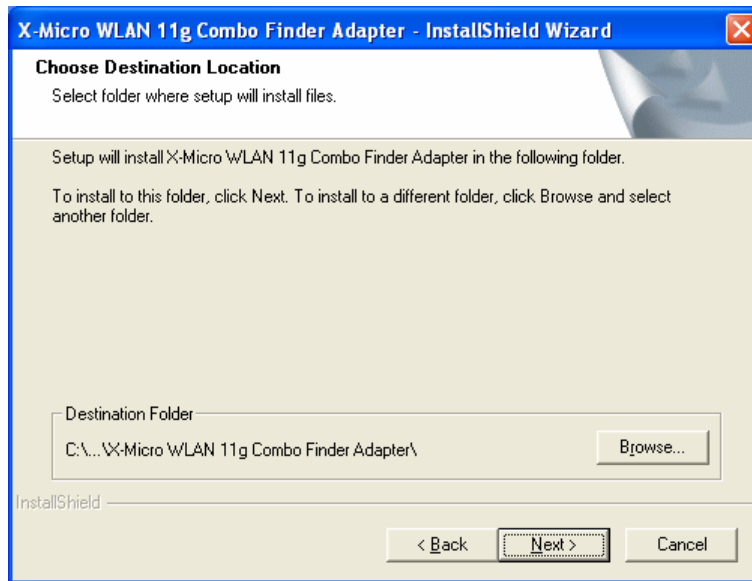


Note: In case this screen does not appear, in Windows Explorer browse to your CD-ROM and double-click the Setup.exe file.

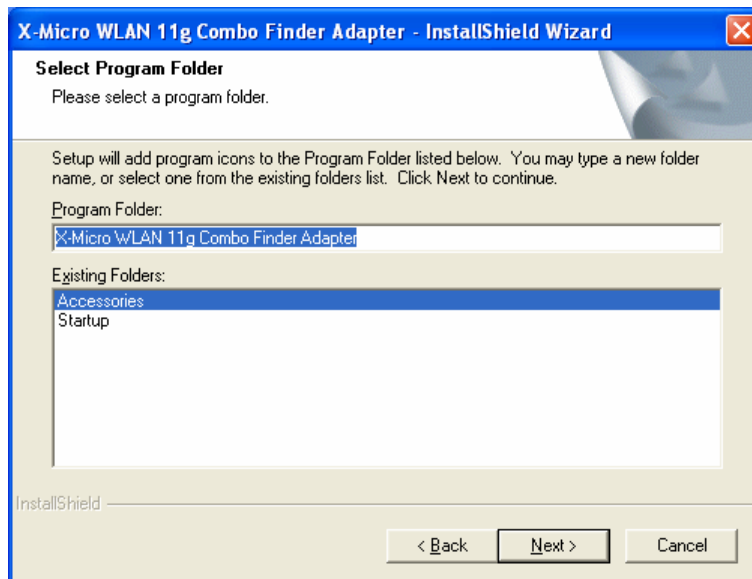
2. Click Install Driver, and click next in the next page.



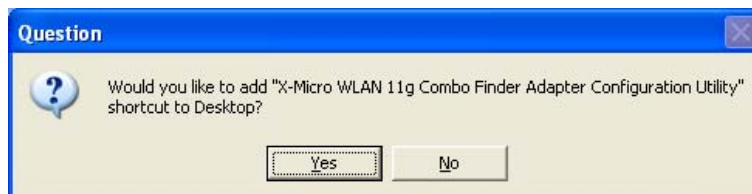
3. Click **[Next]** to accept, or **[Browse]** to change the default destination folder.



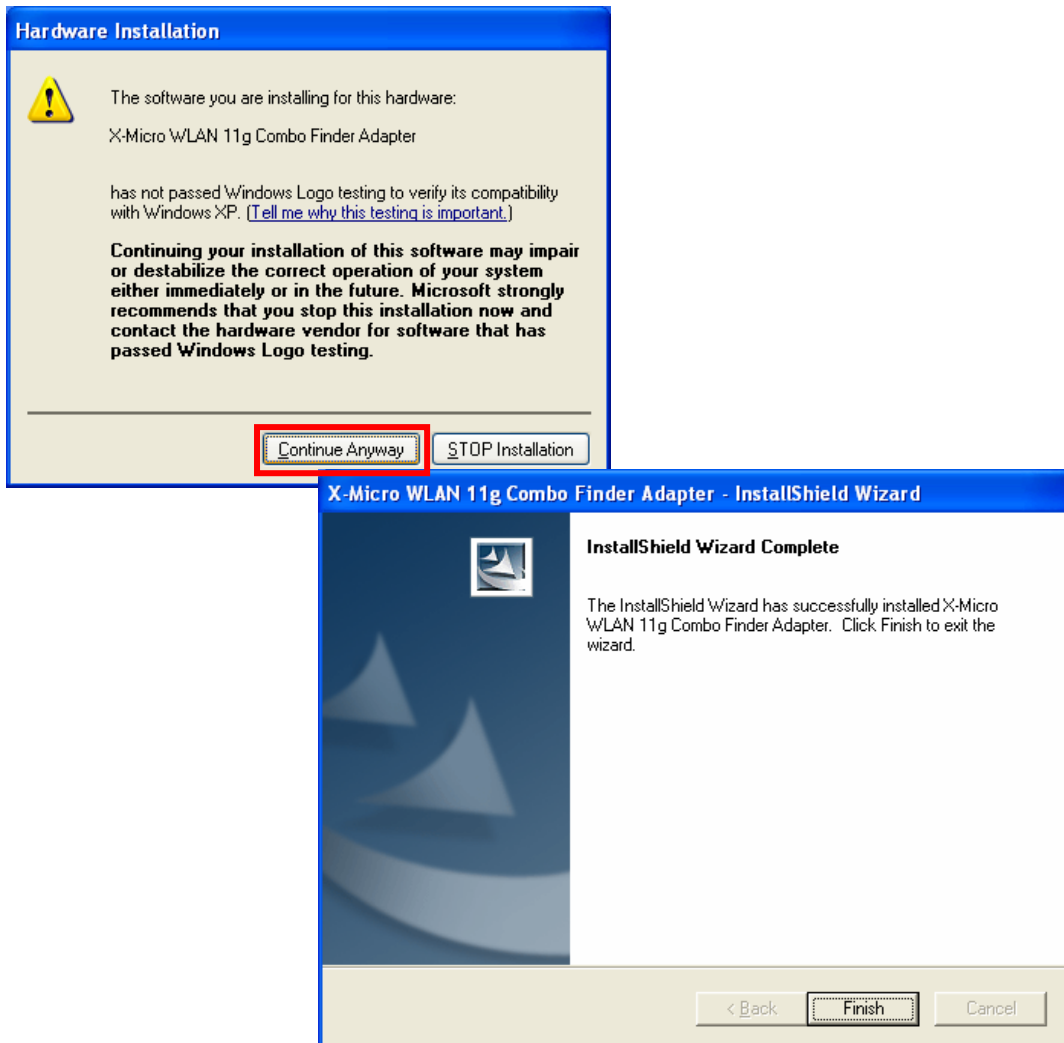
4. Click **[Next]** to accept, or change the default destination folder name.



5. Click **[Yes]** to accept.



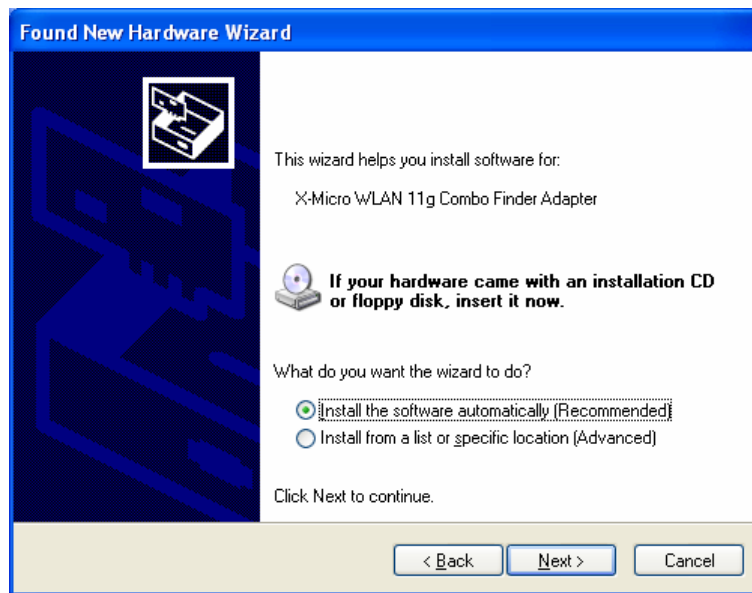
6. Click [Continue Anyway] to accept.



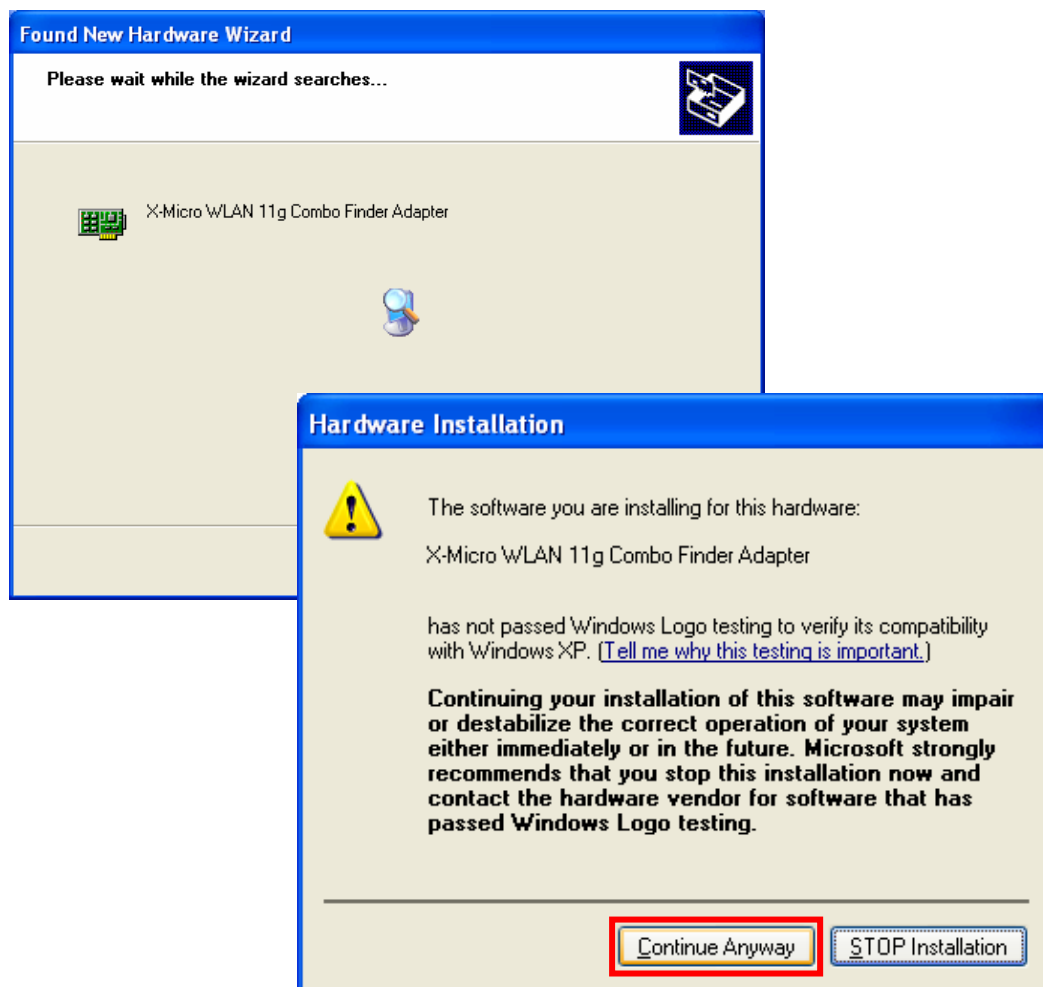
7. Now connect your X-Micro WLAN 11g Combo Finder Adapter to the USB port of your computer. In the *Find New Hardware Wizard* that appears on your screen select [No, not this time], and click [Next].



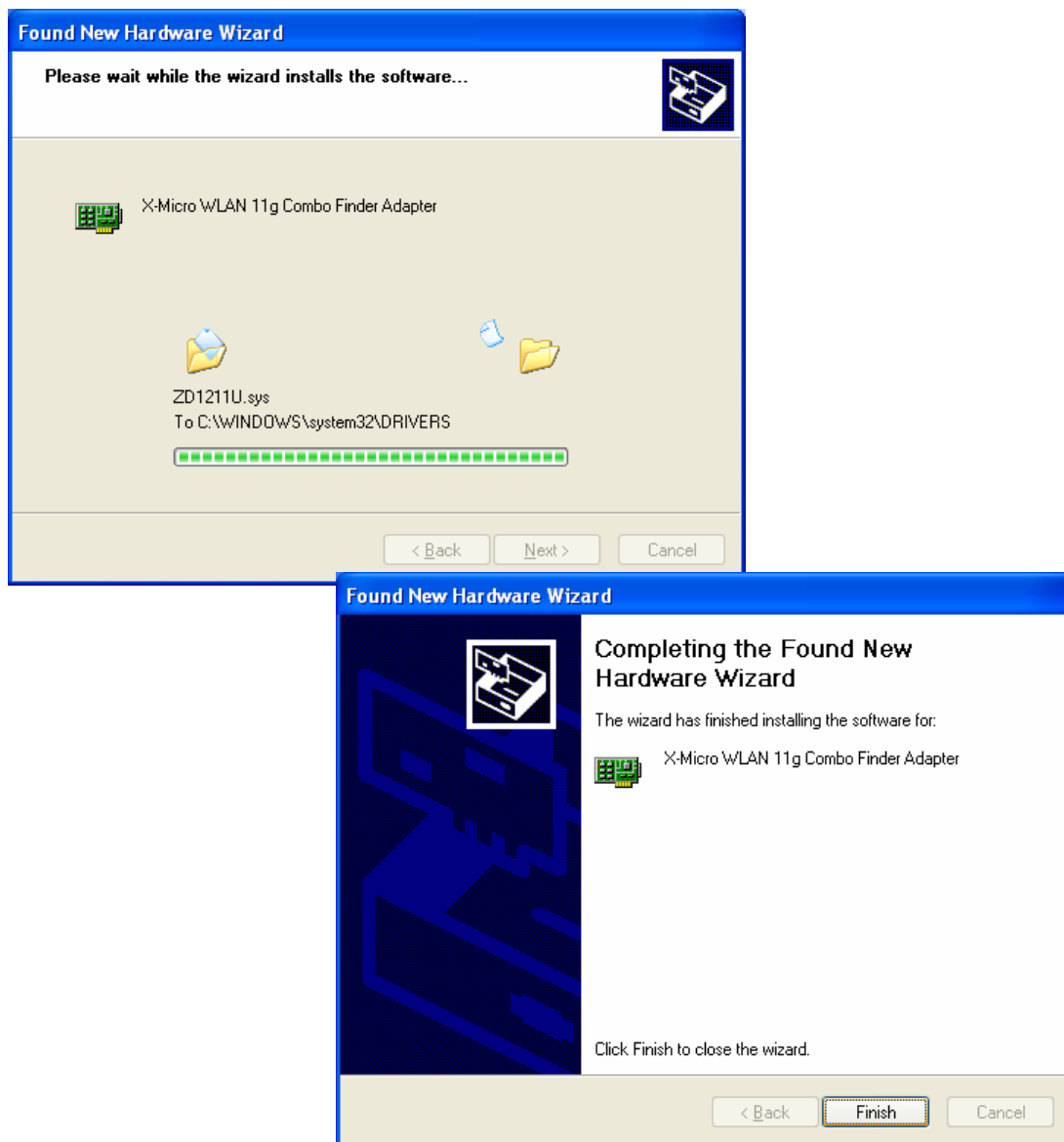
8. Select [Install the software automatically (Recommended)], and click [Next]



9. Press [Continue Anyway] to continue.



10. Click **[Finish]** to finalize the installation. Your X-Micro WLAN 11g Combo Finder Adapter is now ready for use.



X - MICRO
Plug & fly

www.x-micro.com