

***X - MICRO***

**WLAN 11g PCMCIA Card**

Quick Start Guide

# X - MICRO

## Plug & Fly

This product is in compliance with the essential requirements and other relevant provisions of the R&TTE directive 1999/5/EC.



**Product Name:** X-Micro WLAN 11g PCMCIA Card

**Model Name :** XWL-11GPIG

COUNTRY		CHANNELS	MAX. OUT POWER	
			INDOOR	OUTDOOR
<b>Spain</b>	2400-2483.5 MHz	1-13	< 100 mW EIRP	< 100 mW EIRP
<b>France</b>	2400-2454 MHz	1-8	< 100 mW EIRP	< 100 mW EIRP
<b>France</b>	2454-2483.5 MHz	9-13	< 100 mW EIRP	< 10 mW EIRP
<b>Italy</b>	2400-2483.5 MHz	1-13	< 100 mW EIRP	< 100 mW EIRP
<b>UK</b>	2400-2483.5 MHz	1-13	< 100 mW EIRP	< 100 mW EIRP
<b>Netherlands</b>	2400-2483.5 MHz	1-13	< 100 mW EIRP	< 100 mW EIRP
<b>Germany</b>	2400-2483.5 MHz	1-13	< 100 mW EIRP	< 100 mW EIRP
<b>Austria</b>	2400-2483.5 MHz	1-13	< 100 mW EIRP	< 100 mW EIRP
<b>Belgium</b>	2400-2483.5 MHz	1-13	< 100 mW EIRP	< 100 mW EIRP
<b>Switzerland</b>	2400-2483.5 MHz	1-13	< 100 mW EIRP	< 100 mW EIRP
<b>Luxemburg</b>	2400-2483.5 MHz	1-13	< 100 mW EIRP	< 100 mW EIRP
<b>Ireland</b>	2400-2483.5 MHz	1-13	< 100 mW EIRP	< 100 mW EIRP
<b>Portugal</b>	2400-2483.5 MHz	1-13	< 100 mW EIRP	< 100 mW EIRP
<b>Norway</b>	2400-2483.5 MHz	1-13	< 100 mW EIRP	< 100 mW EIRP
<b>Denmark</b>	2400-2483.5 MHz	1-13	< 100 mW EIRP	< 100 mW EIRP
<b>Finland</b>	2400-2483.5 MHz	1-13	< 100 mW EIRP	< 100 mW EIRP
<b>Iceland</b>	2400-2483.5 MHz	1-13	< 100 mW EIRP	< 100 mW EIRP
<b>Greece</b>	2400-2483.5 MHz	1-13	< 100 mW EIRP	< 100 mW EIRP
<b>Lichtenstein</b>	2400-2483.5 MHz	1-13	< 100 mW EIRP	< 100 mW EIRP
<b>Sweden</b>	2400-2483.5 MHz	1-13	< 100 mW EIRP	< 100 mW EIRP

## **FCC INFORMATION**

### **FCC Radiation Exposure Statement**

This equipment complies with FCC radiation exposure limits set forth for an uncontrolled environment. This equipment should be installed and operated with minimum distance 20cm between the radiator & your body. This transmitter must not be co-located or operating in conjunction with any other antenna or transmitter.

The equipment has been tested and found to comply with the limits for a Class B Digital Device, pursuant to part 15 of the FCC Rules. These limits are designed to provide reasonable protection against harmful interference in a residential installation. This equipment generates, uses and can radiate radio frequency energy and, if not installed and used in accordance with the instruction, may cause harmful interference to radio communication. However, there is no grantee that interference will not occur in a particular installation. If this equipment does cause harmful interference to radio or television reception, which can be determined by turning the equipment off and on, the user is encouraged to try to correct the interference by one or more of the following measures:

- Reorient or relocate the receiving antenna.
- Increase the separation between the equipment and receiver.
- Connect the equipment into an outlet on a circuit different from that to which the receiver is connected.
- Consult the dealer or an experienced radio/TV technician for help.

**Notice:** The Part 15 radio device operates on a non-interference basis with other devices operating at this frequency. Any changes or modification not expressly approved by the party responsible could void the user's authority to operate the device.

### **REGULATORY INFORMATION**

X-Micro WLAN 11g PCMCIA Card must be installed and used in strict accordance with the instructions. This device complies with the following radio frequency and safety standards.

#### **USA - Federal Communications Commission (FCC)**

This device complies with Part 15 of FCC Rules. Operation is subject to the following two conditions:

1. This device may not cause harmful interference.
2. This device must accept any interference that may cause undesired operation.

## 1.1 Product Features

- Compliance with IEEE 802.11g and 802.11b standards.
- Highly efficient design mechanism to provide unbeatable performance.
- Achieving data rate up to 108Mbps for 802.11g and 11Mbps for 802.11b with worldwide range coverage.
- Strong network security with WEP and WPA support.
- Auto-switching between the two standards, IEEE 802.11b and 802.11g.
- Driver/Utility support most commonly used operating systems including Windows 98SE/ME/2000/XP.

## 1.2 System Requirements

- Windows 98, 98SE, Millennium Edition (ME), 2000 or XP operating system.
- PC with Pentium III 600MHz system or above.
- At least one PC cardbus socket or PC cardbus adapter.
- CD-ROM drive.

## 2.1 LED Indicators

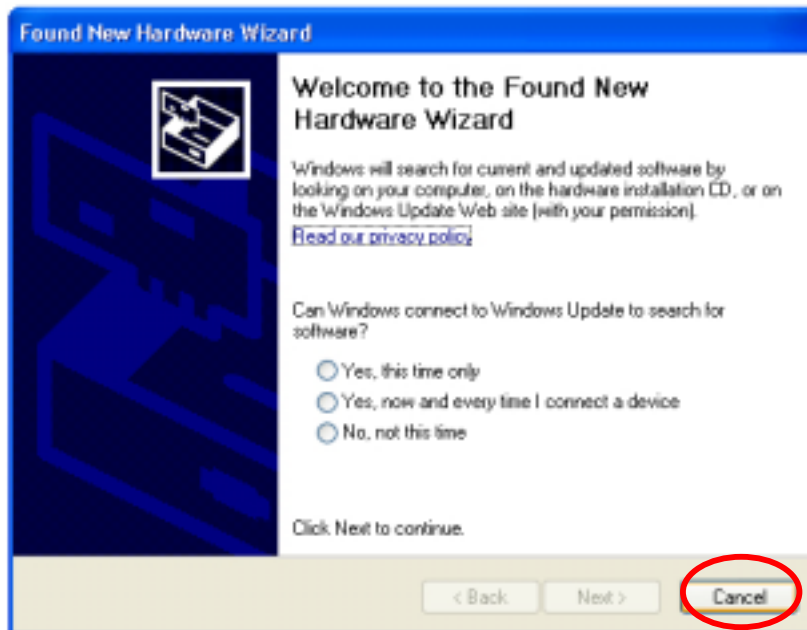
- The Power LED will be on when the unit is powered up.
- A blinking Link LED indicates a WLAN connection.

## 2.2 Installation of the X-Micro WLAN 11g PCMCIA Card

**NOTE:** *All the screenshots of the installation pictured in this guide are based on Windows XP. For other windows operating system, all procedures are the same although the screens may look different.*

## 2.3 Driver and utility Installation

1. Turn on your computer. Insert the X-Micro WLAN 11g PCMCIA Card in the PCMCIA slot of your PC. The *Find New Hardware Wizard* will appear. Click [**Cancel**].

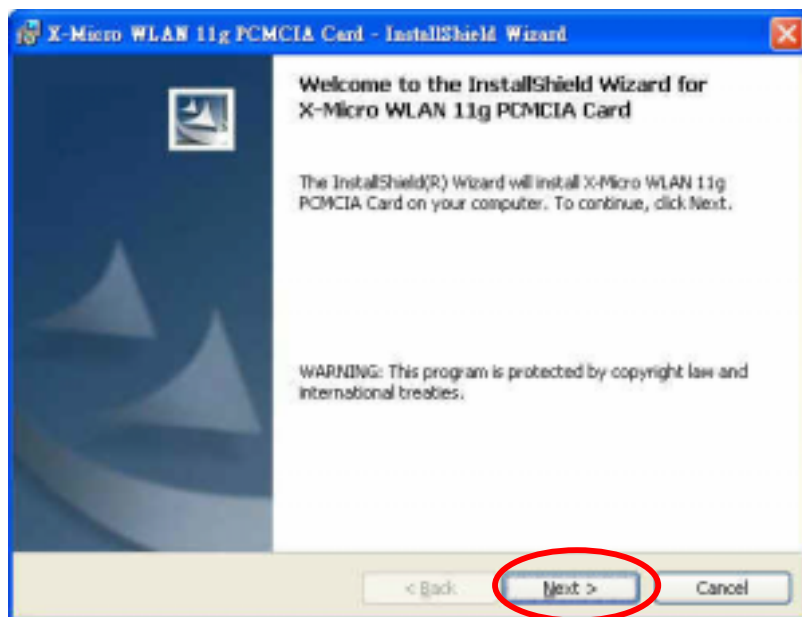


2. Insert the X-Micro WLAN 11g PCMCIA Card CD into the CD-ROM Drive. Select *PCMCIA Card*, and in the next screen click [**Install Driver**].

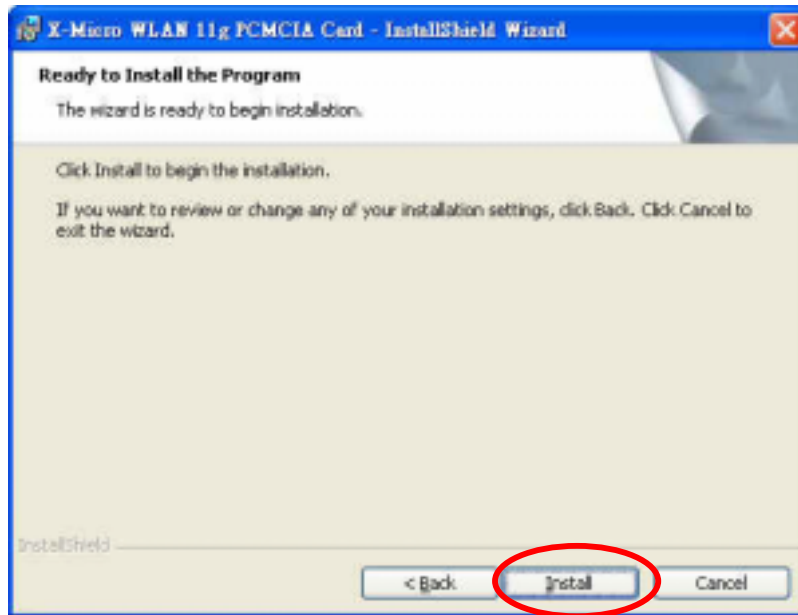




3. The Install Shield Wizard will automatically start. Click **[Next]** to continue.

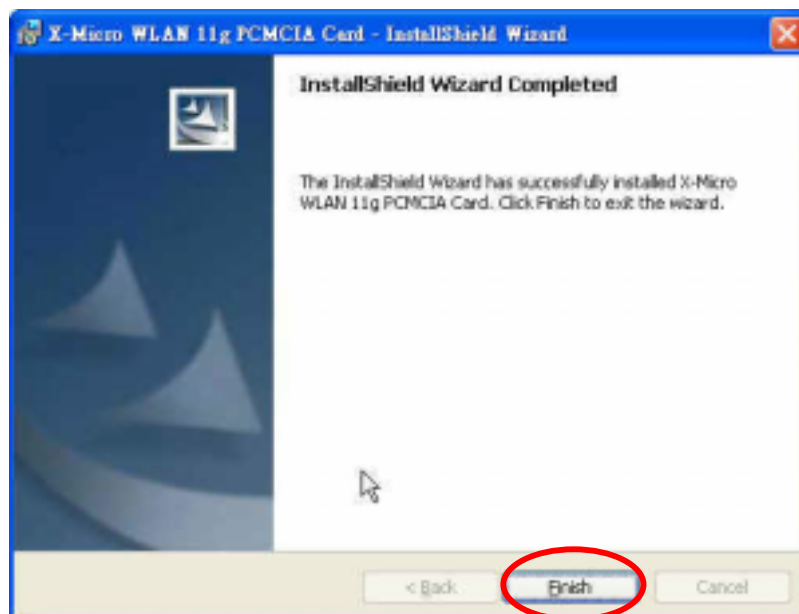


4. In the next screen click [**Install**].



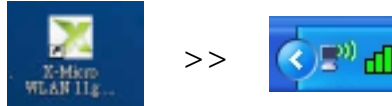
**Note:** in some configurations of Windows 2000 and XP a Microsoft Digital Signature warning may appear on your screen. Click [**Yes**] or [**Continue anyway**] to continue the installation.

5. The X-Micro WLAN 11g PCMCIA Card driver and utility will be installed on your PC. After the install procedure is complete, the following screen will appear. Click [**Finish**] to exit the Wizard. You can now proceed with the configuration of the card.



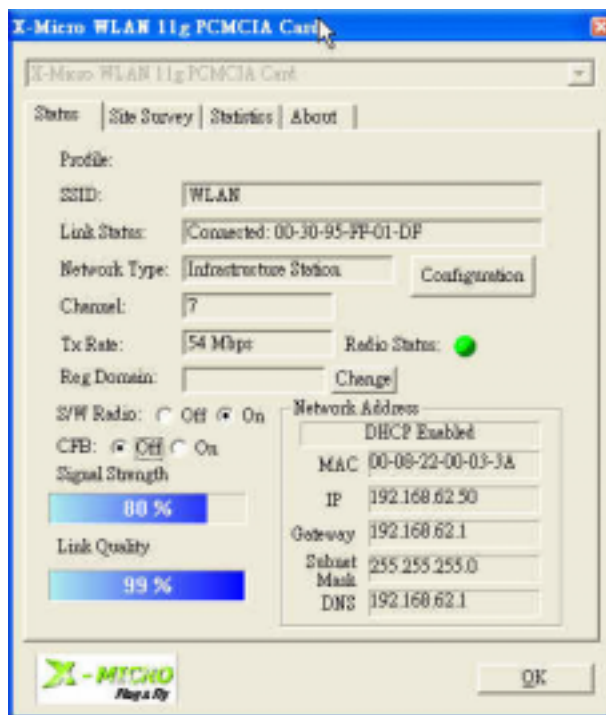
### 3.1 Configuration

Double-click the X-Micro WLAN 11g PCMCIA Card icon that has been created on your desktop. A new histogram icon will appear in the system tray at the lower right corner of your screen. Click the icon once to start the utility program.



### 3.2 Link Information

The X-Micro WLAN 11g PCMCIA Card utility will start with the *status* tab.



#### SSID

Service Set Identifier, which is a unique name shared among all clients and nodes in a wireless network. The SSID must be identical for each client and node in the wireless network.

**Link Status**

Shows the BSSID to identify the wireless network.

**Channel**

Shows the current communication channel.

**Network Type**

Shows the current wireless mode used for wireless communication.

**TxRate**

Shows the current data rate used for transmitting.

**Signal Strength**

Shows the wireless signal strength of the connection between the X-Micro WLAN 11g PCMCIA Card with the Access Point.

**Link Quality**

Shows the link quality of the X-Micro WLAN 11g PCMCIA Card with the Access Point when operating under Infrastructure mode.

Please refer to the electronic user manual on the X-Micro WLAN 11g PCMCIA Card CD-ROM for further directions as to the configuration of your card.