



WLAN 11g PCMCIA Card

Quick Installation Guide



This product is in compliance with the essential requirements and other relevant provisions of the
R&TTE directive 1999/5/EC.



Product Name: X-Micro WLAN 11g PCMCIA Card
Model Name : XWL-11GPAG

COUNTRY		CHANNELS	MAX. OUT POWER	
			INDOOR	OUTDOOR
Spain	2400-2483.5 MHz	1-13	<100mWEIRP	<100mWEIRP
France	2400-2454 MHz	1-8	<100mWEIRP	<100mWEIRP
France	2454-2483.5 MHz	9-13	<100mWEIRP	<10mWEIRP
Italy	2400-2483.5 MHz	1-13	<100mWEIRP	<100mWEIRP
UK	2400-2483.5 MHz	1-13	<100mWEIRP	<100mWEIRP
Netherlands	2400-2483.5 MHz	1-13	<100mWEIRP	<100mWEIRP
Germany	2400-2483.5 MHz	1-13	<100mWEIRP	<100mWEIRP
Austria	2400-2483.5 MHz	1-13	<100mWEIRP	<100mWEIRP
Belgium	2400-2483.5 MHz	1-13	<100mWEIRP	<100mWEIRP
Switzerland	2400-2483.5 MHz	1-13	<100mWEIRP	<100mWEIRP
Luxemburg	2400-2483.5 MHz	1-13	<100mWEIRP	<100mWEIRP
Ireland	2400-2483.5 MHz	1-13	<100mWEIRP	<100mWEIRP
Portugal	2400-2483.5 MHz	1-13	<100mWEIRP	<100mWEIRP
Norway	2400-2483.5 MHz	1-13	<100mWEIRP	<100mWEIRP
Denmark	2400-2483.5 MHz	1-13	<100mWEIRP	<100mWEIRP
Finland	2400-2483.5 MHz	1-13	<100mWEIRP	<100mWEIRP
Iceland	2400-2483.5 MHz	1-13	<100mWEIRP	<100mWEIRP
Greece	2400-2483.5 MHz	1-13	<100mWEIRP	<100mWEIRP
Lichtenstein	2400-2483.5 MHz	1-13	<100mWEIRP	<100mWEIRP
Sweden	2400-2483.5 MHz	1-13	<100mWEIRP	<100mWEIRP

FCC INFORMATION

FCC Radiation Exposure Statement

This equipment complies with FCC radiation exposure limits set forth for an uncontrolled environment.

This equipment should be installed and operated with minimum distance 20cm between the radiator & your body.

This transmitter must not be co-located or operating in conjunction with any other antenna or transmitter.

The equipment has been tested and found to comply with the limits for a Class B Digital Device, pursuant to part 15 of the FCC Rules. These limits are designed to provide reasonable protection against harmful interference in a residential installation.

This equipment generates, uses and can radiate radio frequency energy and, if not installed and used in accordance with the instruction, may cause harmful interference to radio communication. However, there is no grantee that interference will not occur in a particular installation. If this equipment dose cause harmful interference to radio or television reception, which can be determined by turning the equipment off and on, the user is encouraged to try to correct the interference by one or more of the following measures:

--Reorient or relocate the receiving antenna.

--Increase the separation between the equipment and receiver.

--Connect the equipment into an outlet on a circuit different from that to which the receiver is connected

--Consult the dealer or an experienced radio/TV technician for help.

Notice: The Part 15 radio device operates on a non-interference basis with other devices operating at this frequency. Any changes or modification not expressly approved by the party responsible could void the user's authority to operate the device.

REGULATORY INFORMATION

X-Micro WLAN 11g PCMCIA Card must be installed and used in strict accordance with the instructions.

This device complies with the following radio frequency and safety standards.

USA - Federal Communications Commission (FCC)

This device complies with Part 15 of FCC Rules. Operation is subject to the following two conditions:

1. This device may not cause harmful interference.

2. This device must accept any interference that may cause undesired operation.

X-Micro WLAN 11g PCMCIA Card Quick Installation Guide

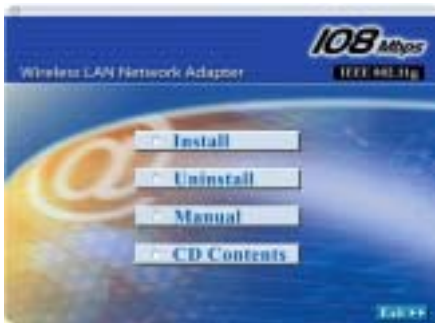
1 Installation and Setup

Before insert PCMCIA Adapter into the PC Card slot of your computer, please install the Driver&Utility Program first.

Make sure that the 11g LAN PCMCIA Card is **NOT** inserted into the PC Card slot.



Turn on the computer.
Insert the CD into the CD-ROM Drive.



NOTE:

All the captured images of installation mentioned in this user's manual were based on Windows XP operating system. For installation on other Windows OS, e.g. Windows 98 SE, all the procedures remains the same.

Click on the **"Install"** button on the selection menu.



InstallShield Wizard starts. Click **"Next"** to continue.



Click **"Finish"** to complete the installation.



Select **"Yes, I want to restart my computer now."** and click **"Finish"** to restart the computer.



NOW.

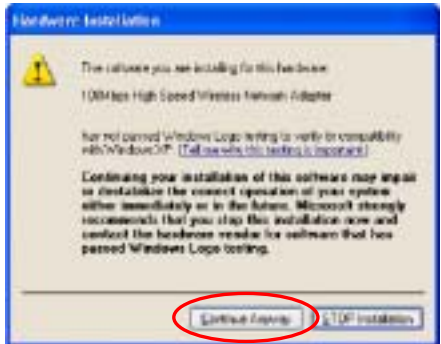
1. After the computer restarted, insert the Wireless LAN PCMCIA Adapter into the empty PC Card slot. Your PC should detect the new hardware automatically.
2. Continue with **Installation setup**.



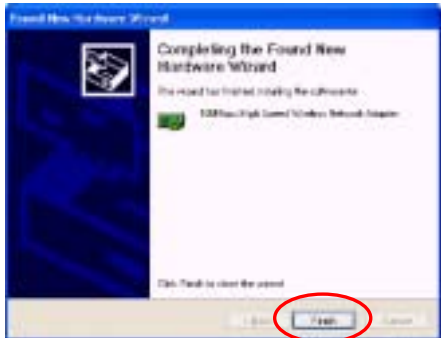
Installation and Setup

Select **“Yes, I want to restart my computer now.”** and click **“Finish”** to restart the computer.

Click "**Continue Anyway**" to continue



Click "**Finish**" to complete new hardware installation.



After successful installation, a utility program icon will appear on your desktop screen. To launch the utility, simply double-click the icon.





WLAN 11g PCMCIA Card

Kurzanleitung zur Installation

X-Micro WLAN 11g PCMCIA-Karte

Kurzanleitung zur Installation

1

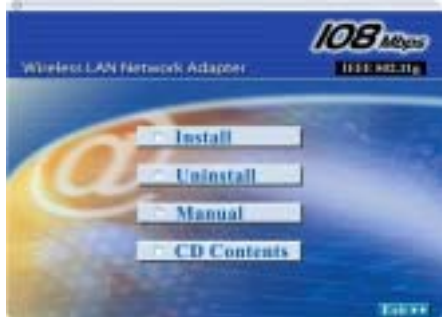
Installation und Setup

Bitte installieren Sie das Treiber- und Utility-Programm, bevor Sie den PCMCIA-Adapter in den PC-Karten-Steckplatz in Ihrem Computer einstecken.

Stellen Sie sicher, dass sich die 11g LAN PCMCIA-Karte **NICHT** im Steckplatz für die PC-Karte befindet.

Schalten Sie den Computer ein.

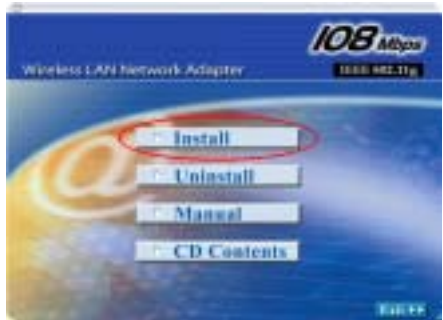
Legen Sie die CD in das CD-ROM-Laufwerk ein.



HINWEIS:

Alle Abbildungen im Benutzerhandbuch sind unter Windows XP erstellt worden. Das Vorgehen bleibt bei der Installation unter anderen Windows-Betriebssystemen, z.B. Windows 98 SE, jedoch das gleiche.

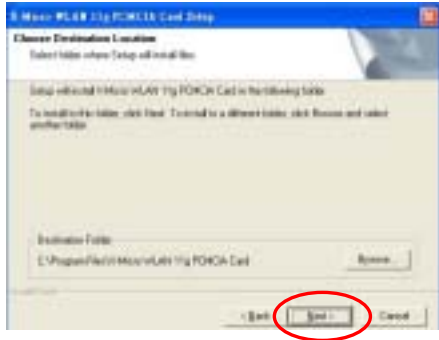
Klicken Sie auf "Install" im Auswahlmönü.



Der InstallShield Wizard startet.
Klicken Sie auf "Next", um fortzufahren.



Klicken Sie auf **"Next"**, um die Programmdateien in das Standardverzeichnis zu installieren.



Wählen Sie ein Programmverzeichnis (Program Folder) und klicken Sie auf **"Next"**, um mit dem Kopieren der Dateien zu beginnen.



Klicken Sie auf
"Finish", um die Installation
abzuschließen.



Wählen Sie "Yes, I want to
restart my computer now,"
und klicken Sie auf "Finish",
um den Computer neu zu
starten.



VERFAHREN SIE WIE FOLGT:

1. Stecken Sie nach dem Neustart des Computers den Wireless-LAN-PCMCIA-Adapter in den unbenutzten PC-Karten-Steckplatz. Ihr PC sollte die neue Hardware nun automatisch erkennen.
2. Fahren Sie mit Installation und Setup fort.

2 Installation and Setup

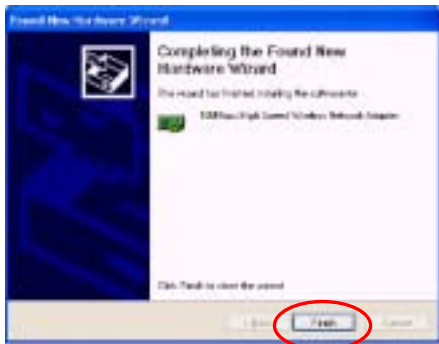
Wählen Sie die erste Option und klicken Sie auf "Next", um fortzufahren.



Klicken Sie auf
"Continue Anyway", um
fortzufahren.



Klicken Sie auf
"Finish", um die Installation der
neuen Hardware abzuschließen.



Nach erfolgreicher Installation erscheint ein Symbol für das Utility-Programm auf Ihrem Desktop. Doppelklicken Sie zum Starten der Utility einfach auf das Symbol.

