

---

# X-Micro WLAN 11b mini USB Adapter Quick Start Guide

---

## INFORMATION TO USER

**Product Name:** X-Micro WLAN 11b mini USB Adapter

**Model Name:** XWL-11BUSX



## FCC INFORMATION

### FCC Radiation Exposure Statement

This equipment complies with FCC radiation exposure limits set forth for an uncontrolled environment. This equipment should be installed and operated with minimum distance 20cm between the radiator & your body. This transmitter must not be co-located or operating in conjunction with any other antenna or transmitter. The equipment has been tested and found to comply with the limits for a Class B Digital Device, pursuant to part 15 of the FCC Rules. These limits are designed to provide reasonable protection against harmful interference in a residential installation. This equipment generates, uses and can radiate radio frequency energy and, if not installed and used in accordance with the instruction, may cause harmful interference to radio communication. However, there is no grantee that interference will not occur in a particular installation. If this equipment dose cause harmful interference to radio or television reception, which can be determined by turning the equipment off and on, the user is encouraged to try to correct the interference by one or more of the following measures:

- Reorient or relocate the receiving antenna.
- Increase the separation between the equipment and receiver.
- Connect the equipment into an outlet on a circuit different from that to which the receiver is connected.
- Consult the dealer or an experienced radio/TV technician for help.

Notice: The Part 15 radio device operates on a non-interference basis with other devices operating at this frequency. Any changes or modification not expressly approved by the party responsible could void the user's authority to operate the device.

## REGULATORY INFORMATION

X-Micro WLAN 11b mini USB Adapter must be installed and used in strict accordance with the manufacturer's instructions. This device complies with the following radio frequency and safety standards.

### **USA - Federal Communications Commission (FCC)**

This device complies with Part 15 of FCC Rules. Operation is subject to the following two conditions:

1. This device may not cause harmful interference.
2. This device must accept any interference that may cause undesired operation.

### Europe - R&TTE Directive

This device complies with the specifications listed below

- ETS 300-826 General EMC requirements for Radio equipment.
- ETS 300-328 Technical requirements for Radio equipment.
- EN60950 Safety Requirements for Radio equipment

The channel identifiers, channel center frequencies, and regulatory domains of each 22-MHz-wide channel are shown in following Table.

COUNTRY		CHANNELS	MAX. OUT POWER	
			INDOOR	OUTDOOR
Spain	2400-2483.5 MHz	1-13	< 100 mW EIRP	< 100 mW EIRP
France	2400-2454 MHz	1-8	< 100 mW EIRP	< 100 mW EIRP
France	2454-2483.5 MHz	9-13	< 100 mW EIRP	< 10 mW EIRP
Italy	2400-2483.5 MHz	1-13	< 100 mW EIRP	< 100 mW EIRP
UK	2400-2483.5 MHz	1-13	< 100 mW EIRP	< 100 mW EIRP
Netherlands	2400-2483.5 MHz	1-13	< 100 mW EIRP	< 100 mW EIRP
Germany	2400-2483.5 MHz	1-13	< 100 mW EIRP	< 100 mW EIRP
Austria	2400-2483.5 MHz	1-13	< 100 mW EIRP	< 100 mW EIRP
Belgium	2400-2483.5 MHz	1-13	< 100 mW EIRP	< 100 mW EIRP
Switzerland	2400-2483.5 MHz	1-13	< 100 mW EIRP	< 100 mW EIRP
Luxemburg	2400-2483.5 MHz	1-13	< 100 mW EIRP	< 100 mW EIRP
Russia	2400-2483.5 MHz	1-13	<10 mW EIRP	<10 mW EIRP
Ireland	2400-2483.5 MHz	1-13	< 100 mW EIRP	< 100 mW EIRP
Portugal	2400-2483.5 MHz	1-13	< 100 mW EIRP	< 100 mW EIRP
Norway	2400-2483.5 MHz	1-13	< 100 mW EIRP	< 100 mW EIRP
Denmark	2400-2483.5 MHz	1-13	< 100 mW EIRP	< 100 mW EIRP
Finland	2400-2483.5 MHz	1-13	< 100 mW EIRP	< 100 mW EIRP
Iceland	2400-2483.5 MHz	1-13	< 100 mW EIRP	< 100 mW EIRP
Greece	2400-2483.5 MHz	1-13	< 100 mW EIRP	< 100 mW EIRP
Lichtenstein	2400-2483.5 MHz	1-13	< 100 mW EIRP	< 100 mW EIRP
Sweden	2400-2483.5 MHz	1-13	< 100 mW EIRP	< 100 mW EIRP

**Read this Quick Start Guide before installing the X-Micro WLAN 11b mini USB Adapter. For complete safety precautions and configuration details, please read the X-Micro WLAN 11b mini USB Adapter User's Manual.**

## **PACKAGE CONTENTS**

If you buy the X-Micro WLAN 11b mini USB Adapter, there are some items that will be included in the box.

<b>Item</b>	<b>Location</b>
X-Micro WLAN 11b mini USB Adapter	In box
X-Micro WLAN 11b mini USB Adapter Quick Start Guide	In box
X-Micro WLAN 11b mini USB Adapter CD-ROM	In box
X-Micro WLAN 11b mini USB Adapter drivers/utility	On CD
X-Micro WLAN 11b mini USB Adapter User's Manual	On CD
X-Micro WLAN 11b mini USB Adapter Quick Start Guide	On CD

If any item is missing, please contact your product provider.

## **PRODUCT INTRODUCTION**

The X-Micro WLAN 11b mini USB Adapter provides high-speed wireless link and networking for desktops or notebooks. Users can have wireless connectivity simply by plugging the device into a USB port and installing the driver / utility on a desktop or notebook. When used with WLAN Access Point or WLAN Router, mobile workers can move freely, while maintaining seamless links to the wired LAN.

## **SYSTEM REQUIREMENTS**

Before installation, please check your system in advance and ensure it meets the minimum requirements as described below.

- Processor: Intel Celeron / Pentium II / Pentium III / Pentium IV; AMD Duron / Athlon
- Operating System: Microsoft Windows 98SE / ME / 2000 / XP
- System memory: 32MB at least
- Hard Drive Free Space: 5MB

## **INSTALLATION OVERVIEW**

Start your computer and then insert the Installation / Documentation CD in the computer's CD-ROM drive. The auto-run installation menu window will appear and the auto-run installation application will detect the Operating System you are using automatically. Just click the button--with the name of Operating System you are using--in the menu to continue the installation process.

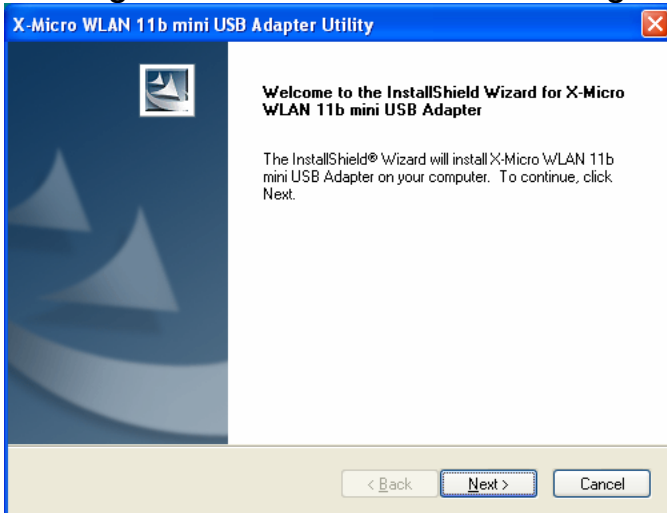
**Note1:** If the auto-run installation menu window doesn't appear automatically, you can utilize the Windows Explorer to browse CD content and run

**install.exe** manually.

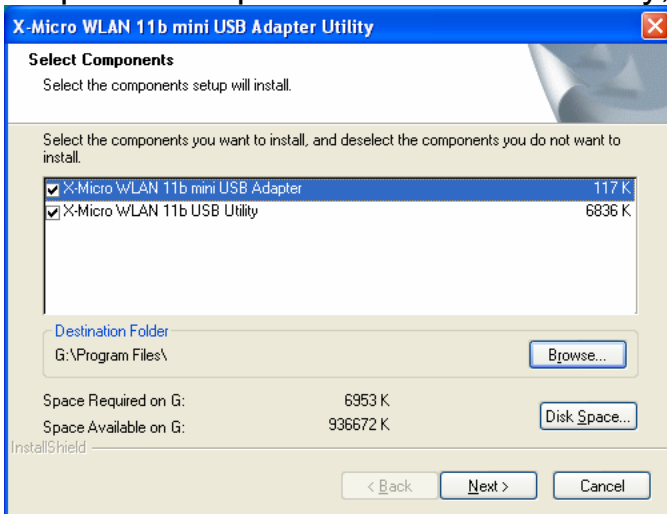
**Note2:** To prevent potential problems during installation, please use the auto-run installation tool on the CD to finish the driver installation before you plug the X-Micro WLAN 11b mini USB Adapter into the computer.

## **INSTALLATION UNDER WINDOWS 2000 and XP**

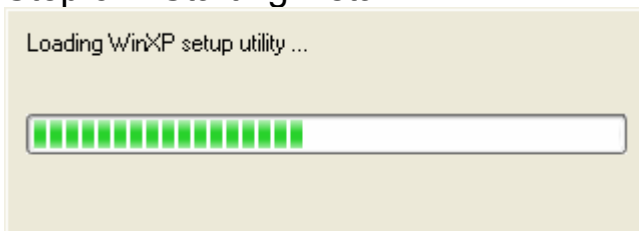
Step 1. Please insert the Device CD Windows XP/2000 was automatically running autorun. The Welcome dialog as below, please click Next



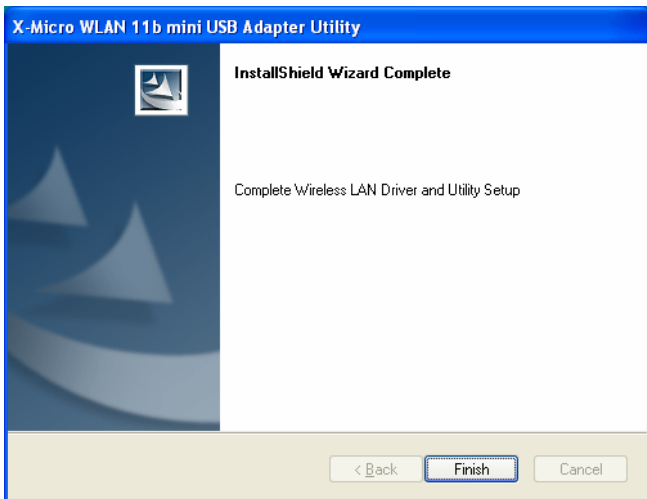
Step 2. Setup WLAN Driver and Utility, please click Next



Step 3. Starting install



Step 4. Click Finish to complete installation.



Step 5. After you install Utility, Hold the X-Micro WLAN 11b mini USB Adapter with the logo facing up, and insert the card into the slot, applying just enough pressure to make sure it is fully seated. Windows XP/2000 automatically detects the X-Micro WLAN 11b mini USB Adapter.

After finished install driver and utility on your system. Let's starting to setup your wireless card. First of all we will see the connection notice in the right corner.

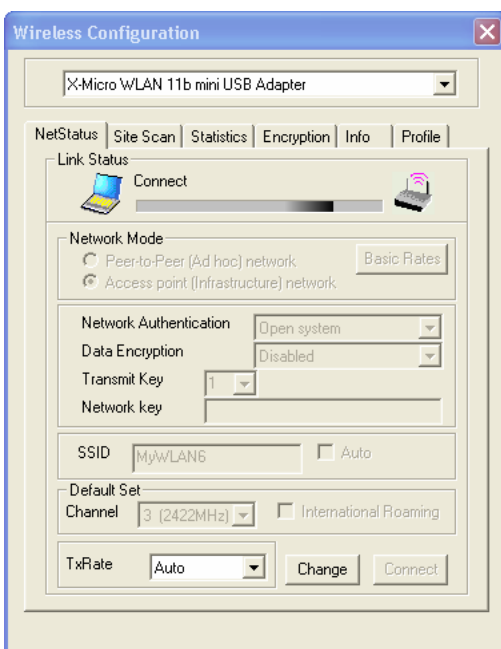


### **X-Micro WLAN 11b mini USB Adapter Configuration**

X-Micro WLAN 11b mini USB Adapter uses its own management software. All functions controlled by users are provided by this application. When you insert the X-Micro WLAN 11b mini USB Adapter into the USB slot, a new icon,



, should appear in the Windows System Tray automatically. Double click that icon and the configuration window will pop up. There are six tabs in this window:



## **NetStatus Tab**

The current status of the X-Micro WLAN 11b mini USB Adapter can be found here. The NetStatus Tab contains several fields where operating parameters of the driver can be viewed or changed. Changes to any of the parameters in this panel can be applied to the driver without a need to restart the computer.

## **Site Scan Tab**

Please wait system to scan or click Re-fresh, all Access Point and Ad-hoc devices within detectable range will be found and their related information will be displayed in the list. You can assign Access Point or Ad-hoc devices which you want connect to. We also can change presently connection just double click SSID from the list.

## **Statistics Tab**

If you have a link with a wireless LAN device, then you can see the real time Link Status, Signal strength, and transmit / receive statistics in this tab. If check the **Turn Radio OFF**, the radio interface will be turn off.

## **Encryption Tab**

You may want an additional measure of security on your wireless network, which can be achieved by using WEP (Wired Equivalent Privacy) encryption. WEP encrypts each frame transmitted from the radio using one of the Keys entered in this panel.

When an encrypted frame is received it will only be accepted if it decrypts correctly. This will only happen if the receiver has the same WEP Key used by the transmitter.

To be written to the driver and registry, each key must consist of hex digits, which means that only digit 0-9 and letter A-F are valid entries.

You can set this to disable, 64 bits or 128 bits.

## **Info Tab**

Info tab shows the Driver version including the detail of Configuration Utility, and NIC firmware version. Users must use this version number when reporting their problems for technical support.

## **Profile tab**

Profile tab allows you to save the information associated with a specific, so you can quickly and easily connect to your network when you are in that location. This page allows you to new, delete and edit your profiles.