

# ***X-MICRO***

**Combo Bluetooth Printer Adapter**

**User's Manual**

## **Copyright**

Copyright 2004 by X-Micro Technology Corp., All rights reserved. No part of this publication may be reproduced, transmitted, transcribed, stored in a retrieval system, or translated into any language or computer language, in any form or by any means, electronic, mechanical, magnetic, optical, chemical, manual or otherwise, without the prior written permission of X-Micro Technology Corp.

## **Disclaimer**

X-Micro Technology Corp. makes no representations or warranties, either expressed or implied, with respect to the contents hereof and specifically disclaims any warranties, merchantability or fitness for any particular purpose. Any software described in this manual is sold or licensed “as is”. Should the programs prove defective following their purchase, the buyer (and not this company, its distributor, or its dealer) assumes the entire cost of all necessary servicing, repair, and any incidental or consequential damages resulting from any defect in the software. Further, X-Micro Technology Corp., reserves the right to revise this publication and to make changes from time to time in the contents hereof without obligation to notify any person of such revision or change.

© All rights reserved.

All trade names are registered trademarks of respective manufacturers listed. The Bluetoothname and the Bluetoothtrademarks are owned by BluetoothSIG,Inc. This manual may not be copied in any media or form without the written consent of original maker.

## INFORMATION TO USER

**Product Name: X-Micro Combo Bluetooth Printer Adapter**

**Model Name: XBT-PACX**

The X-Micro Combo Bluetooth Printer Adapter must be installed and used in strict accordance with the manufacturer's instructions. This device complies with the following radio frequency and safety standards.

### **FCC (Federal Communications Commission)**

This device complies with Part 15 of FCC Rules. Operation is subject to the following two conditions:

1. This device may not cause harmful interference.
2. This device must accept any interference that may cause undesired operation.

### **FCC Radiation Exposure Statement**

This equipment complies with FCC radiation exposure limits set forth for an uncontrolled environment. This equipment should be installed and operated with minimum distance 20cm between the radiator & your body. This transmitter must not be co-located or operating in conjunction with any other antenna or transmitter.

The equipment has been tested and found to comply with the limits for a Class B Digital Device, pursuant to part 15 of the FCC Rules. These limits are designed to provide reasonable protection against harmful interference in a residential installation. This equipment generates, uses and can radiate radio frequency energy and, if not installed and used in accordance with the instruction, may cause harmful interference to radio communication. However, there is no grantee that interference will not occur in a particular installation. If this equipment does cause harmful interference to radio or television reception, which can be determined by turning the equipment off and on, the user is encouraged to try to correct the interference by one or more of the following measures:

- Reorient or relocate the receiving antenna.
- Increase the separation between the equipment and receiver.
- Connect the equipment into an outlet on a circuit different from that to which the receiver is connected.
- Consult the dealer or an experienced radio/TV technician for help.

Notice: The Part 15 radio device operates on a non-interference basis with other devices operating at this frequency. Any changes or modification not expressly approved by the party responsible could void the user's authority to operate the device.

### **R&TTE Directive**

This device complies with the specifications listed below:

- ETS 301 489 -1 & -17 General EMC requirements for Radio equipment.
- ETS 300 328 Technical requirements for Radio equipment.
- EN60950 Safety Requirements for Radio equipment



# TABLE OF CONTENTS

WELCOME .....	1
Features .....	1
System Requirements .....	1
Before You Start .....	2
Connecting your Bluetooth USB Adapter with PC .....	2
X-Micro Combo Bluetooth Printer Adapter .....	2
Getting to Know X-Micro Combo Bluetooth Printer Adapter .....	3
Function of LEDs During Printing .....	3
WIDCOMM BLUETOOTH SOFTWARE DRIVER .....	4
UPDATE BLUETOOTH DRIVER .....	6
SELECT BLUETOOTH SERVICES .....	9
MY BLUETOOTH PLACES .....	11
ADD LOCAL PRINTER .....	13
DISABLE BIDIRECTIONAL SUPPORT .....	14
START PRINTING .....	15
CHANGE PRINTER .....	16
MULTIPLE X-Micro Combo Bluetooth Printer Adapter .....	18
Configuring the first X-Micro Combo Bluetooth Printer Adapter .....	19
Configuring the second X-Micro Combo Bluetooth Printer Adapter ..	20
Configuring the third X-Micro Combo Bluetooth Printer Adapter .....	21
Start Printing .....	23
Change Printer .....	24
PRINTER ERROR MESSAGE .....	26
CANCEL PRINTING JOB .....	27
RESET HANGED BLUETOOTH .....	27
APPENDIX A .....	28
APPENDIX B .....	29
FCC .....	30

# WELCOME

Thank you for your purchase of the X-Micro Combo Bluetooth Printer Adapter. Featuring Bluetooth wireless technology, X-Micro Combo Bluetooth Printer Adapter creates cable-free printing connections between your desktop PCs and your printers. X-Micro Combo Bluetooth Printer Adapter is compatible with all Bluetooth v1.1-certified devices and you can connect your computing devices and printers 100 meters away without cables in your working environments, such as home or office.

## FEATURES

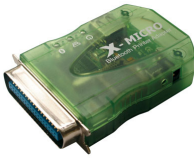
- Compliant with Bluetooth standard version 1.1 .
- Support for Microsoft Windows 98SE, Me, 2000 and XP.
- Operating distance of up to 100 meters in free space.
- Bluetooth Class I (20 dbm).
- Support both USB and 1284 printer port interfaces.
- Both SPP and HCRP print service profiles supported.
- Easy operation and setting up.

## SYSTEM REQUIREMENTS

- PCs must have a Bluetooth device installed, such as a Bluetooth USB dongle. It allows you to communicate with X-Micro Combo Bluetooth Printer Adapter.
- PCs must have a Bluetooth device driver installed, such as Widcomm driver. It is always accompanied with your Bluetooth dongle device purchased. Furthermore, make sure the driver is of the latest revision which supports Bluetooth print service.
- PCs can have different printer drivers installed, printer drivers such as HP, Epson, Canon...etc. You can install at least one before using X-Micro Combo Bluetooth Printer Adapter.
- USB printer shall follow USB printer specification as downloadable from USB forum - <http://www.usb.org>. Some printers do not follow this specification and can not be used.

# BEFORE YOU START

## 1. Confirm Box Contents



X-Micro Combo Bluetooth Printer Adapter



5V Power Adapter



Utility CD



Quick Start Guide

### IMPORTANT

PLEASE READ ALL INSTRUCTIONS AND THE SAFETY GUIDE BEFORE YOU PLUG THE UNIT INTO THE PRINTER.

## CONNECTING YOUR BLUETOOTH USB ADAPTER WITH PC

- Connect your Bluetooth USB dongle with your PC.
- Install Widcomm Bluetooth software driver.



## X-Micro Combo Bluetooth Printer Adapter



USB Connector

IEEE-1284 connector



Mode Button

DC Power Jack

## GETTING TO KNOW YOUR X-Micro Combo Bluetooth Printer Adapter

X-Micro Combo Bluetooth Printer Adapter supports two interfaces which can be used to connect with your printer.

- 1). IEEE-1284 - It is a 36-pin male connector on the front. Connect it to your printer. If your printer hides its female connector inside its case, then you have to open it.
- 2). USB - It is a USB type A connector. You need to connect one end of the USB cable to X-Micro Combo Bluetooth Printer Adapter, then connect another end to the printer.

**Note** : If your printer supports both interfaces, we recommend you to choose just one to connect with X-Micro Combo Bluetooth Printer Adapter. If you connect X-Micro Combo Bluetooth Printer Adapter to both of them, 1284 interface will be the functioning one.

- 3). Apply power to X-Micro Combo Bluetooth Printer Adapter by using the 7.5V DC power adapter accompanied, it is also the only way to RESET X-Micro Combo Bluetooth Printer Adapter.
- 4). Mode button is used by the advanced user to configure the printer adapter for some special purposes, it is normally left unused. You also can refer to the Utility Manual in CD for how to use it.

### FUNCTION OF LEDS DURING PRINTING

#### ● POWER LED

- Power LED turns on when POWER is applied to X-Micro Combo Bluetooth Printer Adapter.

#### ● BLUETOOTH LED

- Bluetooth LED is blinking when Bluetooth link is established but no data is transmitted on the line.
- Bluetooth LED is ON when PC is wirelessly sending data to printer through X-Micro Combo Bluetooth Printer Adapter.

#### ● PRINTER LED

- Printer LED is ON when there is a USB or parallel (IEEE-1284) printer connected to the X-Micro Combo Bluetooth Printer Adapter.
- Printer LED is OFF when no printer is connected.

# WIDCOMM BLUETOOTH SOFTWARE DRIVER

**NOTE :** Skip this section if you already installed Widcomm driver in your PC. This software is **NOT** included in our X-Micro Combo Bluetooth Printer Adapter package. We assume you already purchased a Bluetooth USB dongle and it already bundled this software. We also assume you already installed this driver in your PC. If **NOT**, please read the following messages to learn how to do it.

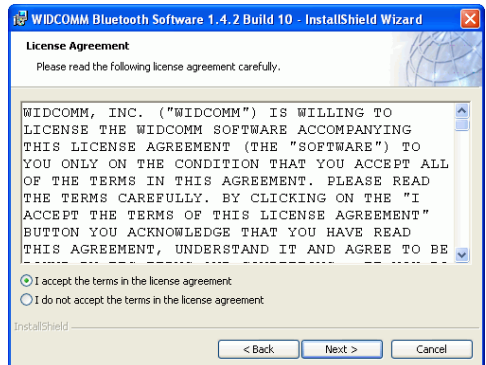
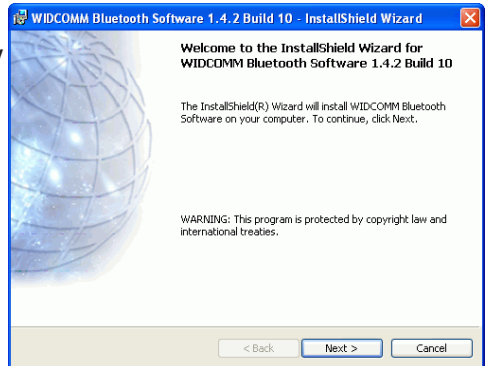
You need to install a software driver which supports Bluetooth print service, and Widcomm Bluetooth Software Driver ver. 1.3.2.7. or after is the one you need. Most of the time, this Widcomm Driver is accompanied with the Bluetooth USB Dongle you purchased. Try to download the latest revision because print service may not be supported in the previous releases.

There are other Bluetooth services which Widcomm driver provides. We will only emphasize on the print service, and you may try to know other services by you own.

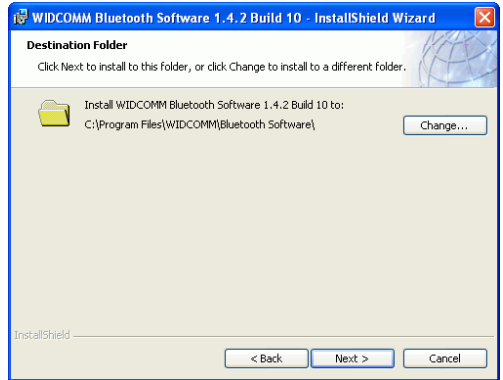
The following steps tell you how to install the Widcomm driver.

**Step 1 :** Find **Setup.exe** from the given Widcomm Driver CD or downloaded driver files, and double click on it to install Widcomm Bluetooth Software. It opens the InstallShield Wizard dialog box, then click **Next**.

**Step 2 :** Accept the software license agreement. Click **Next**.

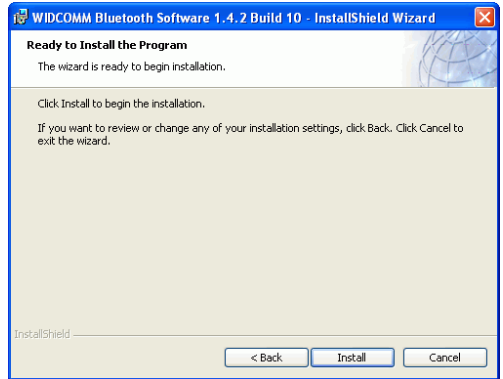


**Step 3 :** Select destination folder, you can choose the default or change to your favorite.

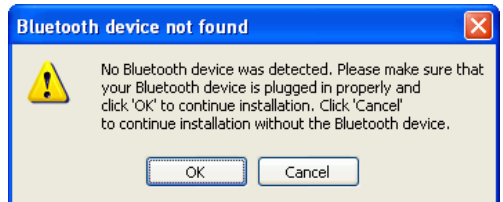





**Step 4 :** Click **Install** to start the installation.

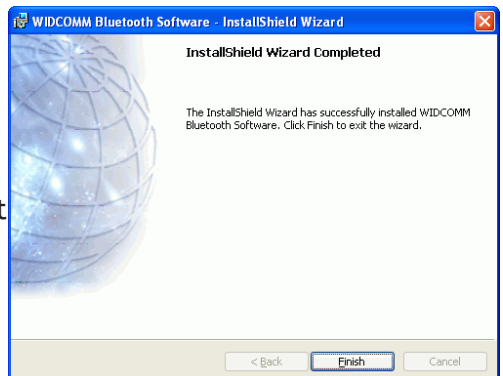
If you have not plugged in Bluetooth Dongle onto your PC before, one reminding window will show up to ask you to plug in it before installation can be finished.



**Step 5 :** Click **OK** to continue the installation.



**Step 6 :** Installation is complete . My Bluetooth Places  should appear on your desktop and a similar icon also appears on the lower right corner of your screen. You can double click  on desktop or right click  on the lower right corner of your screen, then click “Explore My Bluetooth Places” menu to start “My Bluetooth Places” program.



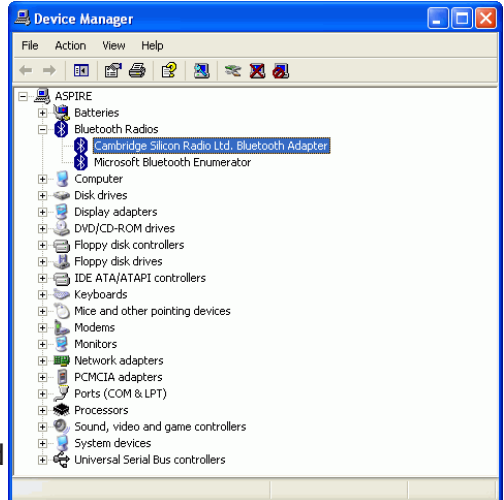
# UPDATE BLUETOOTH DRIVER

**NOTE :** Read this section only if you are using Windows XP SP1 (or later releases). Skip otherwise.

This section is a reference topics to tell you how to prevent conflict when installing your USB Bluetooth Dongle in your PC. It has **NOTHING** to do with X-Micro Combo Bluetooth Printer Adapter which you purchased. Here, we assume you already purchased a Bluetooth USB dongle and it is using CSR technology (i.e. chipset).

Plug a USB Bluetooth Dongle into your PC.

Windows XP SP1 (or after) is supporting Bluetooth. It will automatically create Bluetooth drivers for you. These drivers does not work with Widcomm driver, and you need to update them.



## Step 1 :

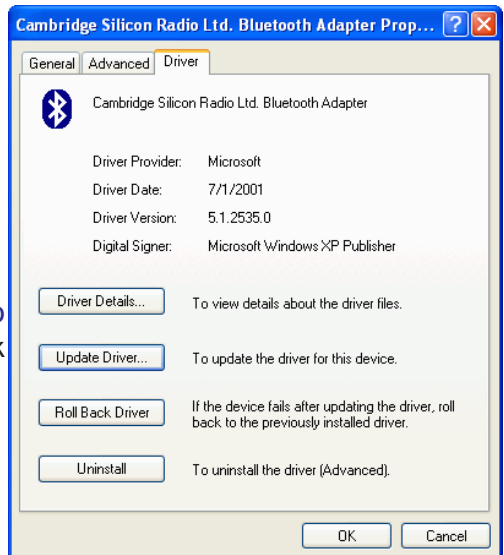
- Click **START**
- Select **Control Panel** .
- Select **System**.
- Select **Device Manager**.
- In **Bluetooth Radios**, you can find two Bluetooth devices.

## Step 2 :

- Double-click **Cambridge Silicon Radio Ltd. Bluetooth Adapter** or right-click on it and then select **Property**, click on **Driver** page.

## Step 3 :

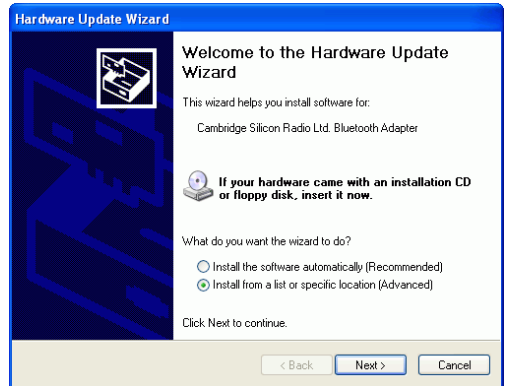
- Click **Update Driver....**



### Step 4 :

Default is : Install the software automatically (Recommended). Please do not select it.

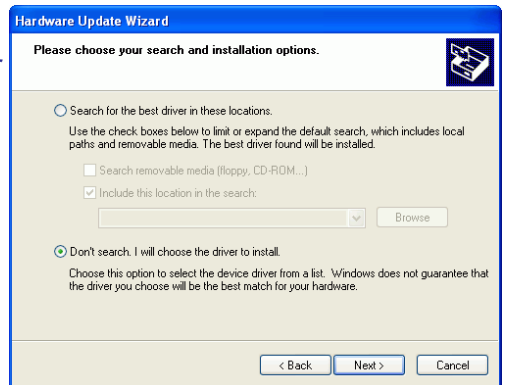
Select Install from a list or specific location (Advanced). Then click Next.



### Step 5 :

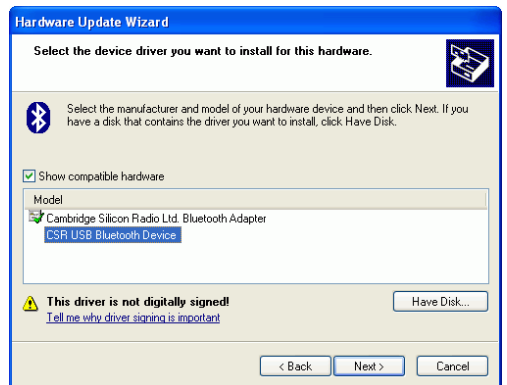
Default is Search for the best driver in these locations. Please do not select it.

Select Don't search. I will choose the driver to install. click Next.

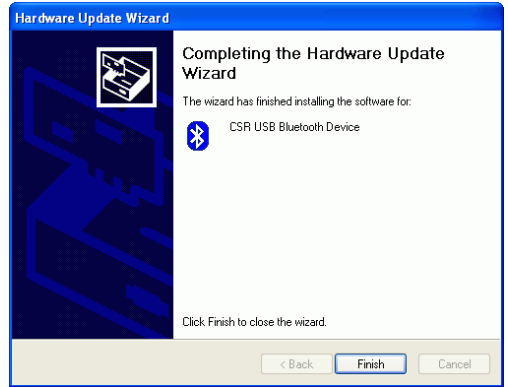


### Step 6 :

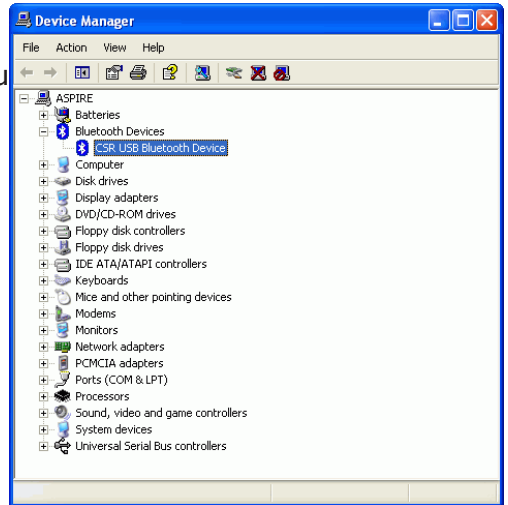
Select CSR USB Bluetooth Device, then click Next.



**Step 7 :**  
Click Finish.



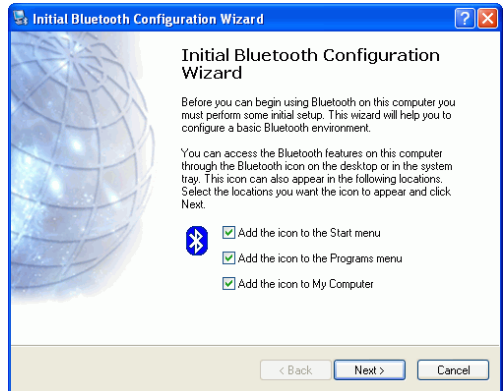
**Step 8 :**  
After these update driver steps, you will see only one bluetooth device in the Device Manager. This is what Widcomm driver really supports.



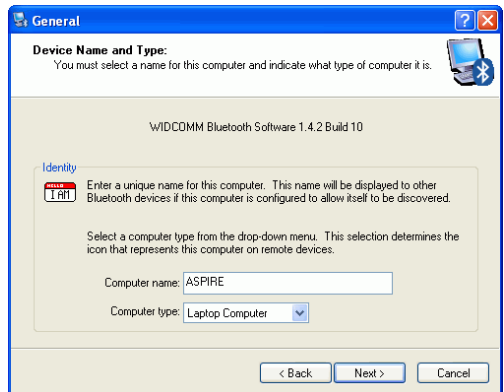
# SELECT BLUETOOTH SERVICES

When the first time Widcomm driver is installed, and USB Bluetooth Dongle is plugged to your system, you will be asked to configure your Bluetooth services for your system.

**Step 1 :** Double-click on the bluetooth icon on the lower-right corner of the screen, you will see configuration wizard, Click Next button.



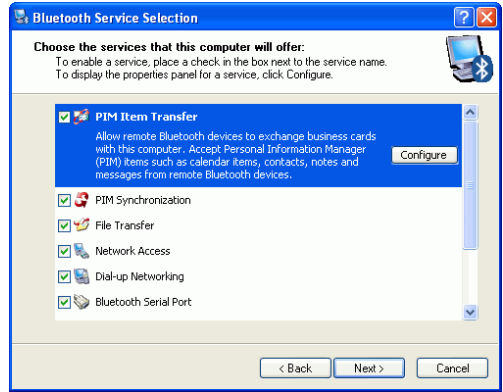
**Step 2 :** Assign computer name and specify computer type, then click Next button. These can be customer defined.



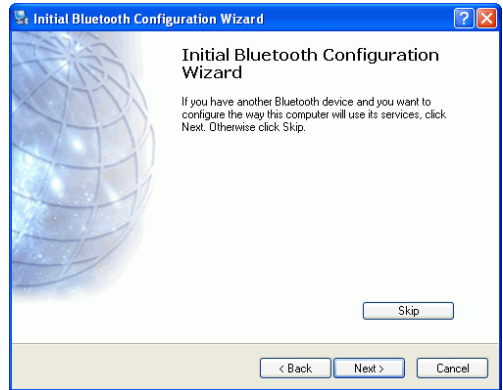
**Step 3 :** Click Next button to configure Bluetooth services.



**Step 4 :** The default setting is that all services are available, you can check or uncheck one or more services, then click Next button.



**Step 5 :** click skip and then click Next button.




**Step 6 :** configuration is completed.

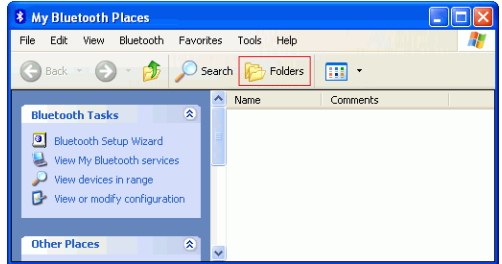


# MY BLUETOOTH PLACES


## Step 1 :

Method 1 :

Double click  on your desktop.  
Click Folder on the toolbar. Folder window will appear on left side of your screen.



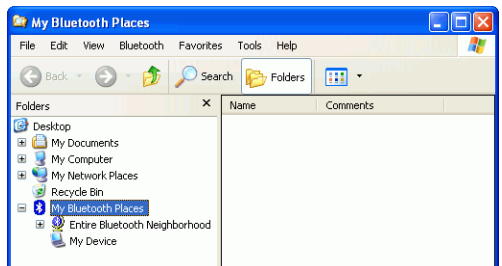
Method 2:

Right click  on the lower right hand corner of your screen.  
Select [Explore My Bluetooth Places](#).



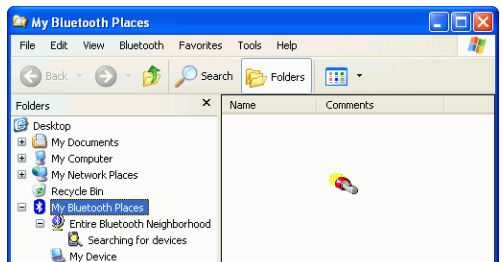
Two folders appear on the window.  
They are :

[Entire Bluetooth Neighborhood](#)  
and [My Device](#).

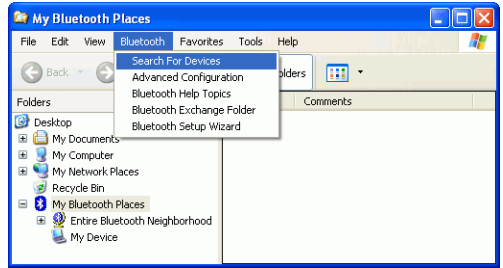


## Step 2 :

Click [Entire Bluetooth Neighborhood](#) to search for devices available to you. Once Bluetooth devices are detected, their icons together with device names will be displayed on the screen.



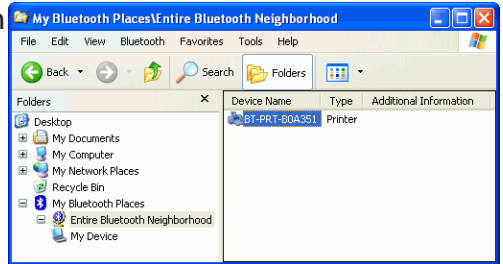
You also may start a search for devices by clicking **Bluetooth** from the toolbar.



### Step 3 :

In this example, One Bluetooth printer device is found in your Bluetooth neighborhood.

This is the service we want to know. We will look at it later.



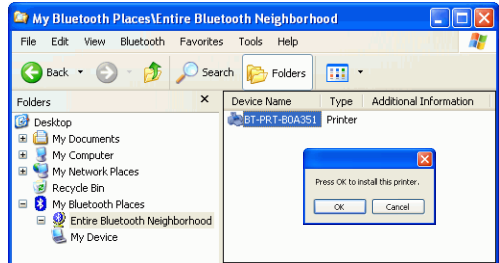
The “My Bluetooth Places” program provides an easy way to find different application services through Bluetooth connections. A variety of Bluetooth services and explanations can be found in the “Help” file of the “My Bluetooth Places” program.

# ADD LOCAL PRINTER

In the following example, we assume a X-Micro Combo Bluetooth Printer Adapter (with series# : BT-PRT-B0A351) is connected to an EPSON Stylus C61 printer.

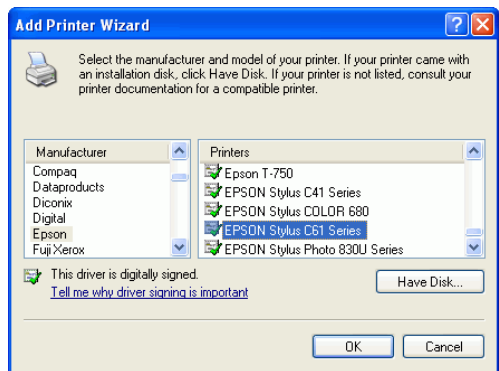
## Step 1 :

From **My Bluetooth Places**, right click on X-Micro Combo Bluetooth Printer Adapter folder (with series# : BT-PRT-B0A351), then select **OK** to install a printer driver for it.



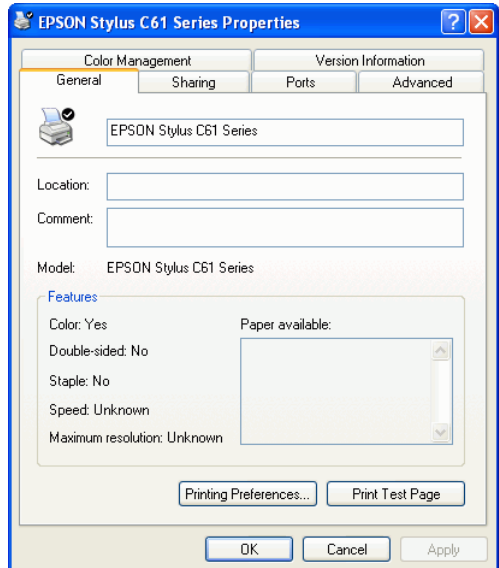
## Step 2 :

Add Printer Wizard will show up, find the brand name and model number of the printer driver you want this X-Micro Combo Bluetooth Printer Adapter to use. It will ask you to install the printer driver if it has not been installed in your system before. If the driver has been installed, Add Printer Wizard will pass very quickly. In this example, we select EPSON Stylus C61 as the printer, supposed its driver was installed before, so just click **OK** to continue.



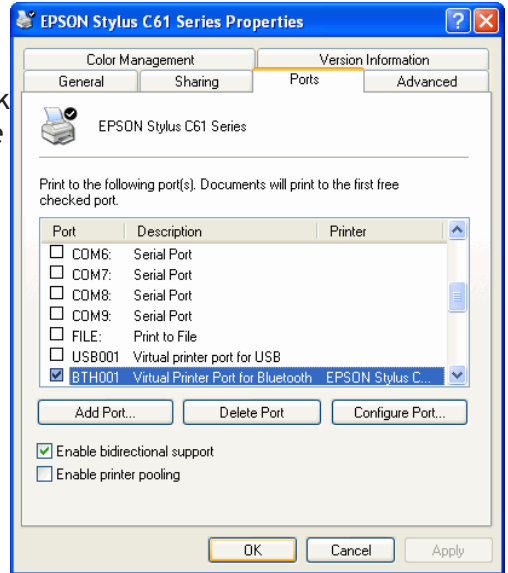
## Step 3 :

From **General** page, you can assign a name such as **EPSON Stylus C61 Series** to the X-Micro Combo Bluetooth Printer Adapter just selected. At end user side, you will only find a printer named **EPSON Stylus C61 Series**, you will not see any printer named BT-PRT-B0A351.

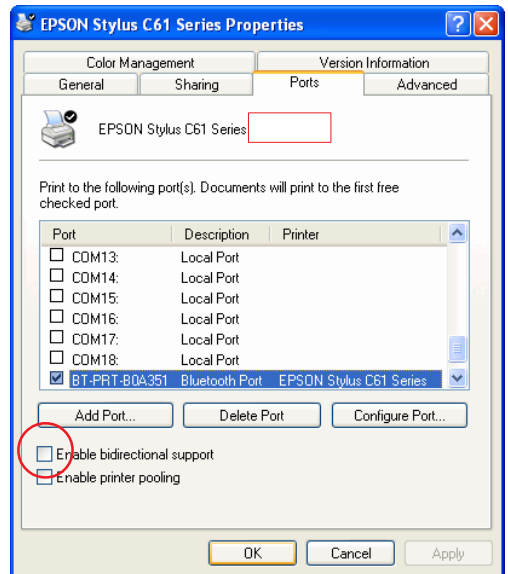


# DISABLE BIDIRECTIONAL SUPPORT

From **Ports** page, there is a check box - **Enable bidirectional support**. This feature allows computer to talk with printer bidirectionally. Because some functions are not supported by Bluetooth, if enabling this feature, some printers may stay at wait state for one minute after printing is done.



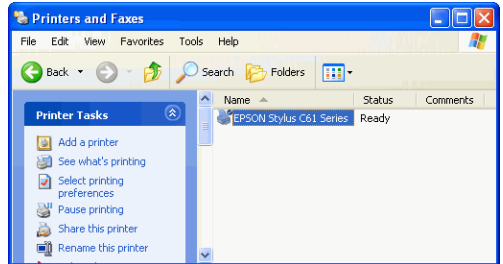
We recommend user to **unmark** or **disable** bidirectional support.



Click **OK** to complete the installation.

# START PRINTING

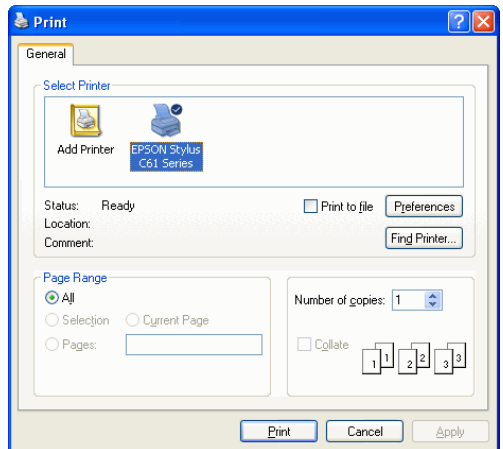
Click **My Computer** icon on the desktop screen, select **Control Panel**, select **Printers and Faxes**, then you can find a Bluetooth Printer is there : **EPSON Stylus C61 Series**.



Print a file by using X-Micro Combo Bluetooth Printer Adapter is quite straight forward, it is just like the normal way you are printing a file.

For **EPSON Stylus C61 Series** :

When page range and number of copies screen prompts, select **EPSON Stylus C61 Series** printer, then click **OK**.



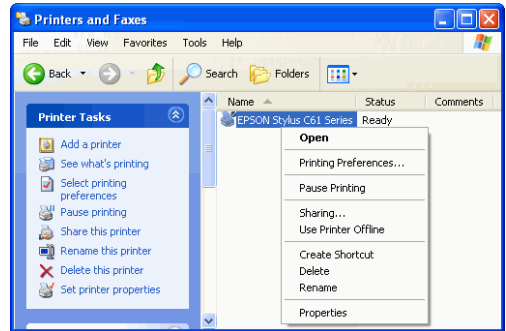
EPSON Stylus C61 Series

# CHANGE PRINTER

In your home or office, there may be two or three different printers coming from different brands. In previous example, we selected EPSON Stylus C61 color printer as our bluetooth printer. If you want to change it to another printer, such as EPSON Stylus Photo 830U, then you shall know how to change printer driver to a different one.

## Step 1 :

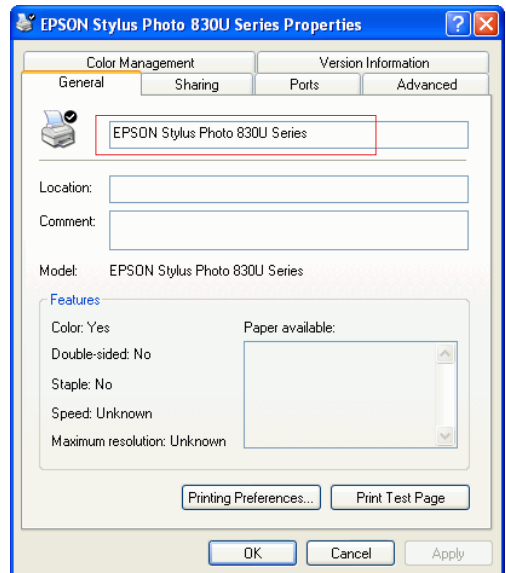
- Select Control Panel .
- Select Printers and Faxes.
- Right click on EPSON Stylus C61 Series printer icon.
- Click on Properties.



## Step 2 :

- You can change printer name to such as :
- EPSON Stylus Photo 830U Series.

Click on **Advanced** tab to see if the driver of EPSON Stylus Photo 830U has been installed before.

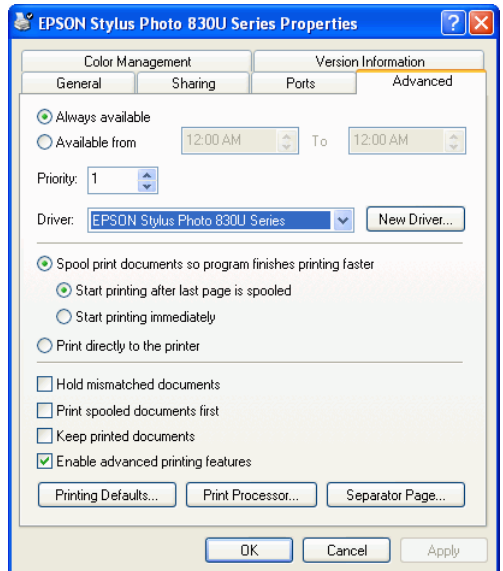


### Step 3 :

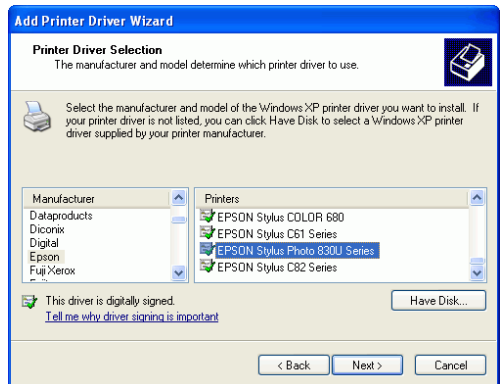
From **Advanced** page, try to find the driver of EPSON Stylus Photo 830U.

If there is an EPSON Stylus Photo 830U driver installed before, select it and click **OK** to complete the change.

If there is none, click **New Driver** and follow the instructions to install it.



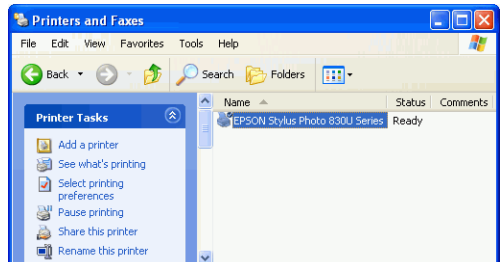
Once New Driver is selected, this screen will prompt to ask you to install new driver step by step.



### Step 4 :

From **Ports** page, please **unmark** or **disable** bidirectional support.

### Step 5 :



**must be connected to the X-Micro Combo Bluetooth Printer Adapter now**

Previous sections talk about how to do a printing job with a X-Micro Combo Bluetooth Printer Adapter. This section is talking about when multiple adapters are installed in your office, how to configure each adapter before printing? Supposed there are three X-Micro Combo Bluetooth Printer Adapter, two of them are connected to two EPSON Stylus C61 printers and one is connected to an EPSON Stylus Photo 830U printer separately.

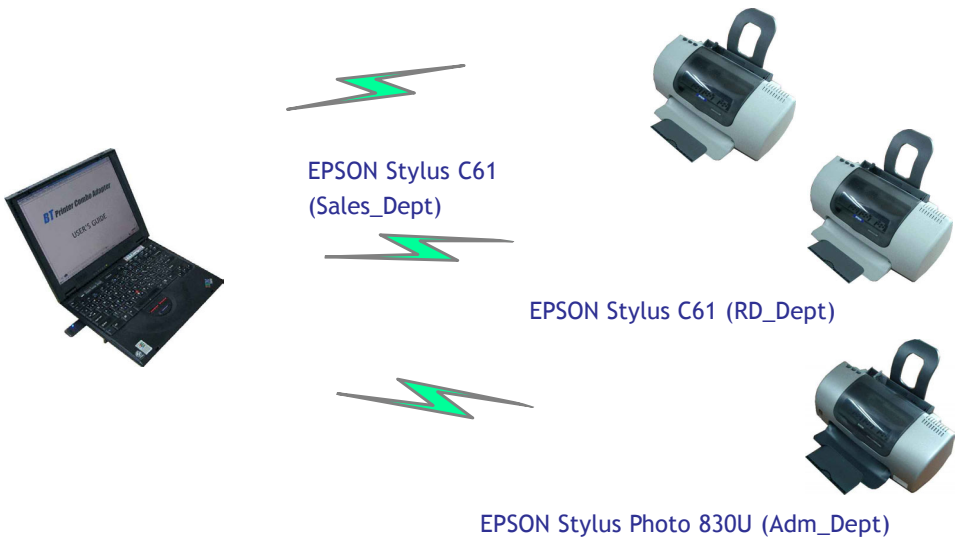
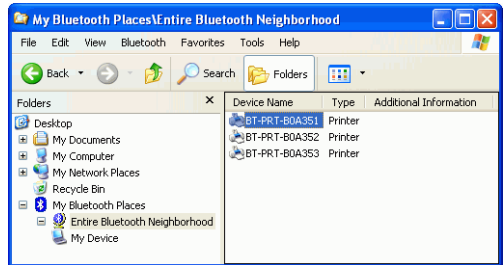
If you power on three X-Micro Combo Bluetooth Printer Adapter, then from [My Bluetooth Places](#), click the [Entire Bluetooth Neighborhood](#), three X-Micro Combo Bluetooth Printer Adapter will be found. Each of them have a series number, so it is easy to configure printer driver for them.

In the following example, we assume :

BT-PRT-B0A351 is connecting to EPSON Stylus C61.

BT-PRT-B0A352 is connecting to EPSON Stylus C61.

BT-PRT-B0A353 is connecting to EPSON Stylus Photo 830U.

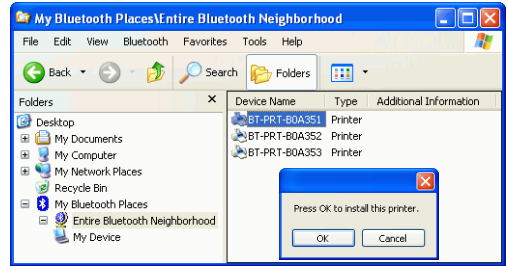


# 1. Configuring the first X-Micro Combo Bluetooth Printer Adapter

Connect the first X-Micro Combo Bluetooth Printer Adapter to an EPSON Stylus C61 printer.

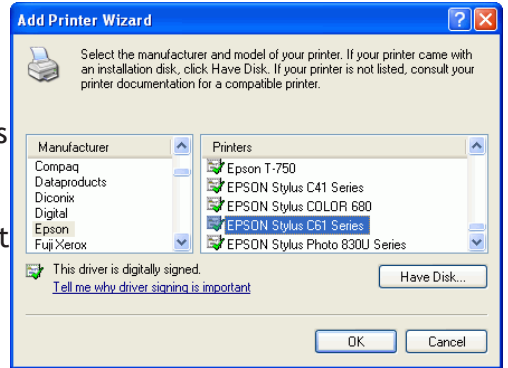
## Step 1 :

From **My Bluetooth Places**, right click on the first X-Micro Combo Bluetooth Printer Adapter folder (with series# : BT-PRT-B0A351), then select OK to install a printer driver for it.



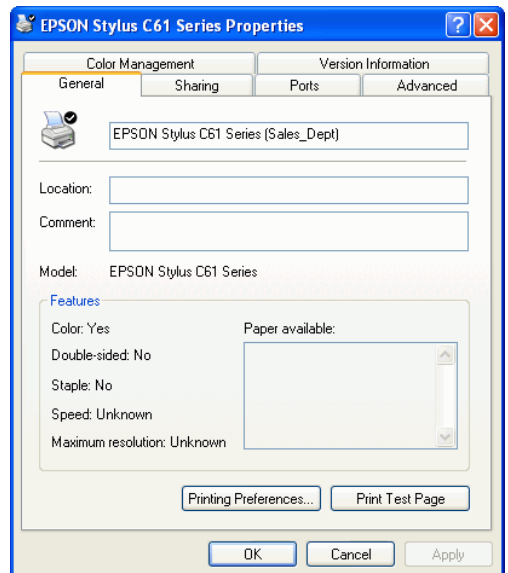
## Step 2 :

Add Printer Wizard will show up, find the brand name and model number of the printer you want this X-Micro Combo Bluetooth Printer Adapter to use. It will ask you to install the printer driver if it has not been installed in your system before. If the driver has been installed, Add Printer Wizard will pass very quickly. In this example, we select EPSON Stylus C61 as the printer, supposed its driver was installed before, so just click OK to continue.



## Step 3 :

From **General** page, you can assign a name such as **EPSON Stylus C61 (Sales\_Dept)** to the first X-Micro Combo Bluetooth Printer Adapter just selected. At end user side, you will only find a printer named **EPSON Stylus C61 (Sales\_Dept)**, you will not see any printer named BT-PRT-B0A351.



## Step 4 :

From **Ports** page, please **unmark** or

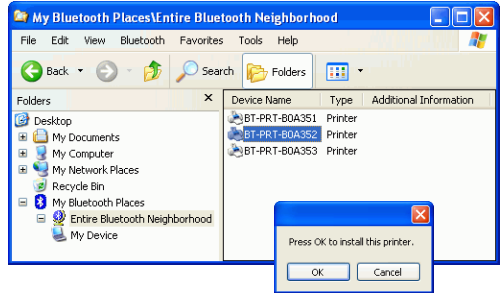
disable bidirectional support.  
Click OK to complete the installation.

## 2. Configuring the second X-Micro Combo Bluetooth Printer Adapter

Connect the second X-Micro Combo Bluetooth Printer Adapter to another EPSON Stylus C61 printer.

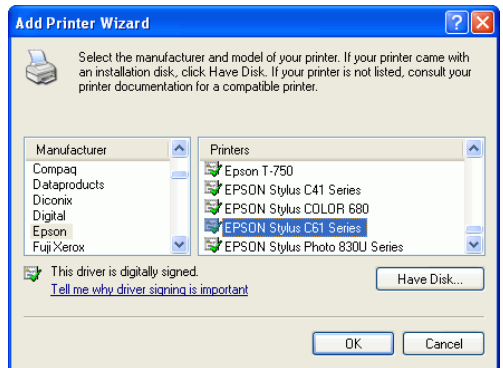
### Step 1 :

From **My Bluetooth Places**, right click on the second X-Micro Combo Bluetooth Printer Adapter folder (with series# : BT-PRT-B0A352), then select OK to install a printer driver for it.



### Step 2 :

Add Printer Wizard will show up, select EPSON Stylus C61 as the printer, because its driver was installed before, so just click OK to continue.



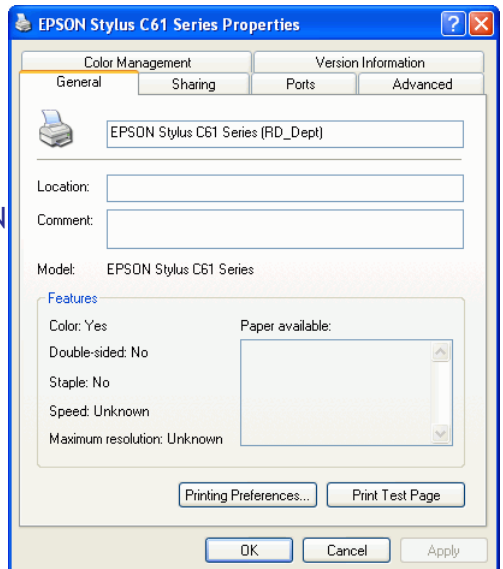
### Step 3 :

From **General** page, you can assign a name such as **EPSON Stylus C61 (RD\_Dept)** to the second X-Micro Combo Bluetooth Printer Adapter just selected. At end user side, you will only find a printer named **EPSON Stylus C61 (RD\_Dept)**, you will not see any printer named BT-PRT-B0A352.

### Step 4 :

From **Ports** page, please **unmark** or **disable** bidirectional support.

Click **OK** to complete the installation.

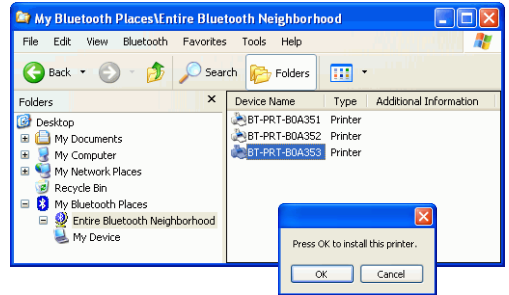


### 3. Configuring the third X-Micro Combo Bluetooth Printer Adapter

Connect the third X-Micro Combo Bluetooth Printer Adapter to an EPSON Stylus Photo 830U printer.

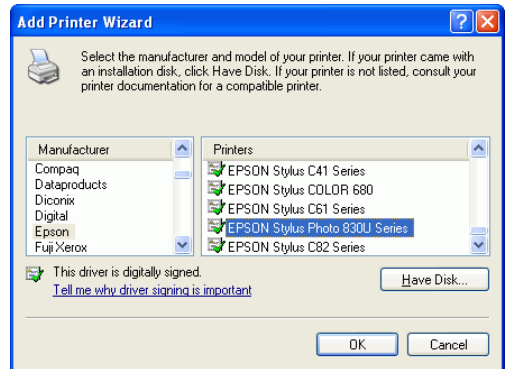
#### Step 1 :

From **My Bluetooth Places**, right click on the third X-Micro Combo Bluetooth Printer Adapter folder (with series# : BT-PRT-B0A353), then select **OK** to install a printer driver for it.



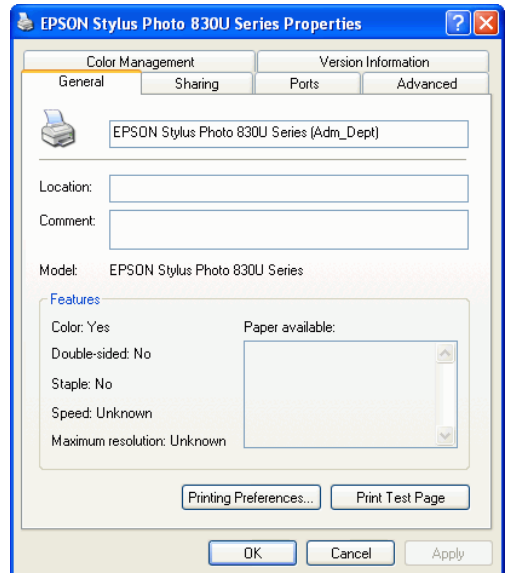
#### Step 2 :

Add Printer Wizard will show up, select **EPSON Stylus Photo 830U** as the printer, supposed its driver has been installed before, so just click **OK** to continue.



#### Step 3 :

From **General** page, you can assign a name such as **EPSON Stylus Photo 830U (Adm\_Dept)** to the third X-Micro Combo Bluetooth Printer Adapter just selected. At end user side, you will only find a printer named **EPSON Stylus Photo 830U (Adm\_Dept)**, you will not see any printer named BT-PRT-B0A353.

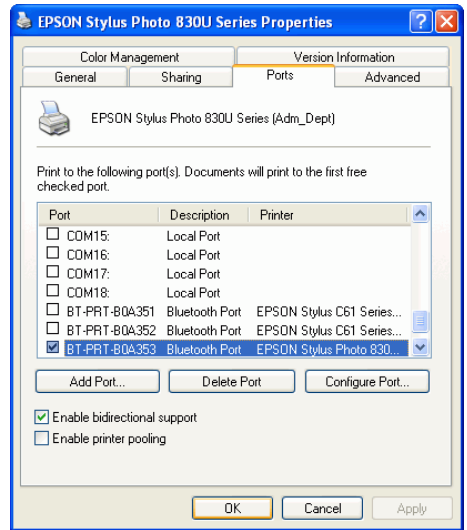


#### Step 4 :

From **Ports** page, you can see three printer ports are used :

1. BT-PRT-BOA351.
2. BT-PRT-BOA352.
3. BT-PRT-BOA353.

They are functioning the same as the original LPT1: printer port of your PC. The difference is LPT1: is for cable connection, while these three Bluetooth printer ports are used for wireless connections.



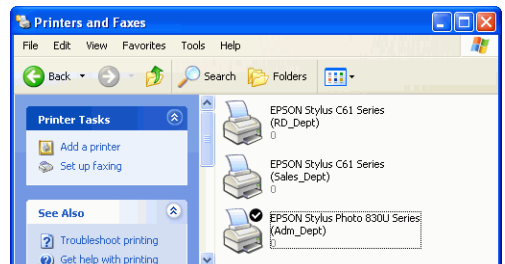
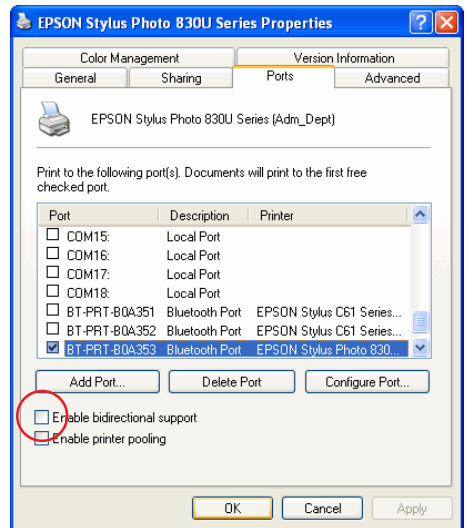
Please **unmark** or **disable** bidirectional support.

Click **OK** to complete the installation.

Click **My Computer** icon on the desktop screen, select **Control Panel**, select **Printers and Faxes**, then you can find three Bluetooth Printers are there :

1. EPSON Stylus C61 (Sales\_Dept).
2. EPSON Stylus C61 (RD\_Dept).
3. EPSON Stylus Photo 830U (Adm\_Dept).

If you want to print by using these printers, please refer to next page.

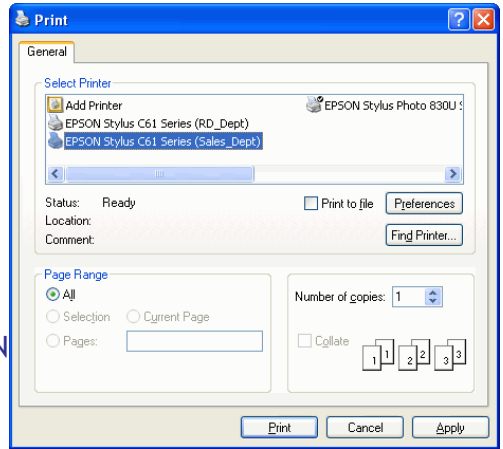


## Start Printing :

Print a file by using X-Micro Combo Bluetooth Printer Adapter is quite straight forward, it is just like the normal way you are printing a file.

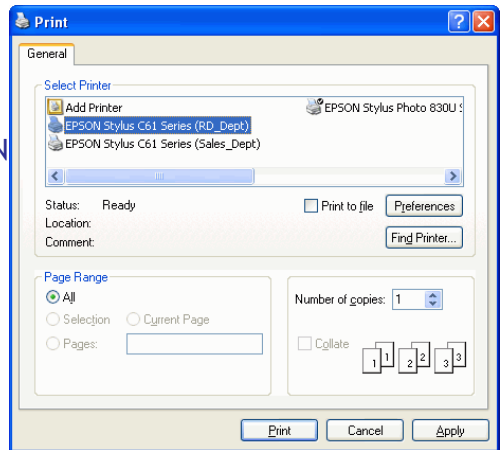
For EPSON Stylus C61 (Sales\_Dept) :

When page range and number of copies screen prompts, select **EPSON Stylus C61 (Sales\_Dept)** printer, then click OK.



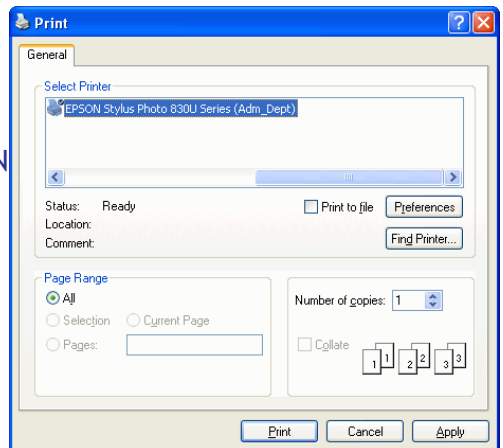
For EPSON Stylus C61 (RD\_Dept) :

When page range and number of copies screen prompts, select **EPSON Stylus C61 (RD\_Dept)** printer, then click OK.



For EPSON Stylus Photo 830U (Adm\_Dept) :

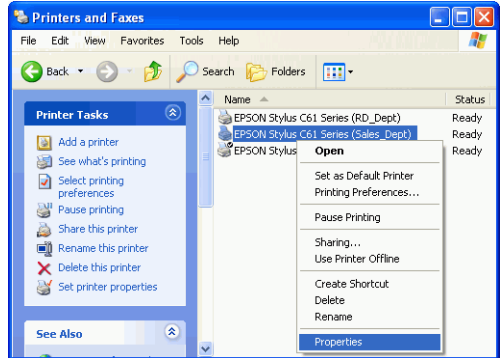
When page range and number of copies screen prompts, select **EPSON Stylus Photo 830U (Adm\_Dept)** printer, then click OK.



## Change Printer :

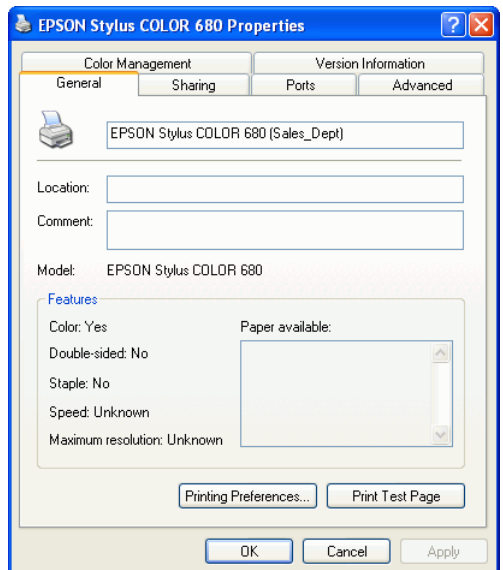
### Step 1 :

Select Control Panel .  
Select Printers and Faxes.  
Right click on printer EPSON Stylus C61 Series (Sales\_Dept) icon.  
Click on Properties.



### Step 2 :

You can change printer name to such as :  
EPSON Stylus COLOR 680 (Sales\_Dept).

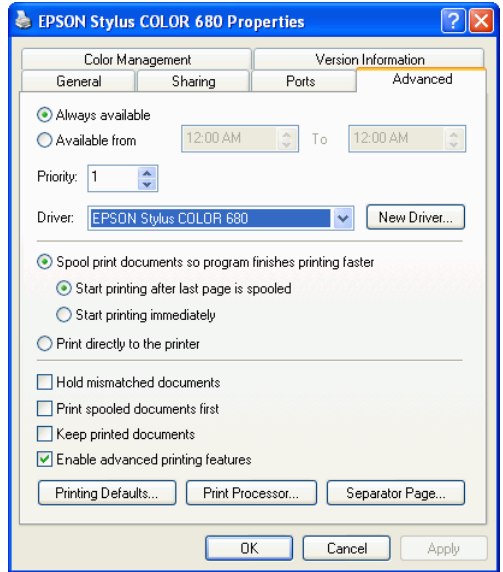


### Step 3 :

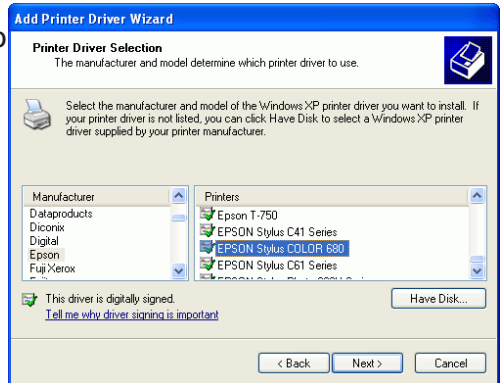
Click on **Advanced** tab to see if the driver of EPSON Stylus COLOR 680 has been installed before.

If yes, click **OK** to complete the change.

If not, click **New Driver** and follow the instructions to install it.



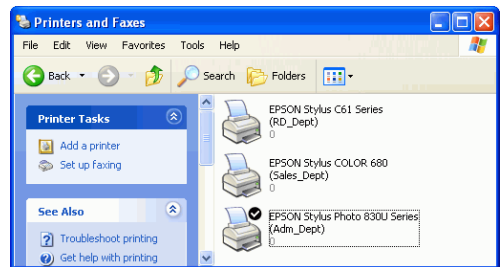
If New Driver is selected, this screen will prompt to instruct you to install new driver step by step.



### Step 4 :

When installation of new printer driver is complete, the Printers and Faxes screen will look like this.

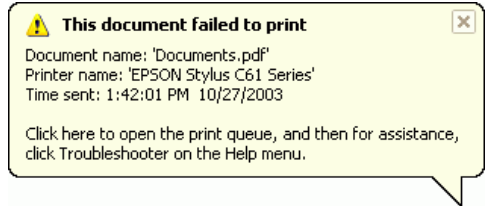
**EPSON Stylus COLOR 680 (Sales\_Dept)** is coming out as the new printer.



# PRINTER ERROR MESSAGE

There are some conditions which will stop the printing process :

1. INKs 100% run out.
2. Paper Jam.
3. Printer is BUSY.
4. Printer is not turned on.

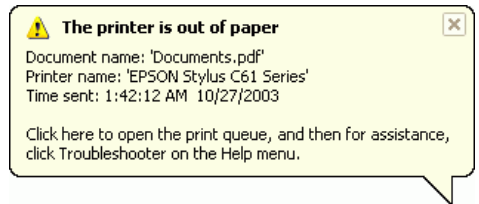


When the above conditions occurred, PC will pop out a failed to print message on the screen one minute later. User can clean the problem and continue the printing after.

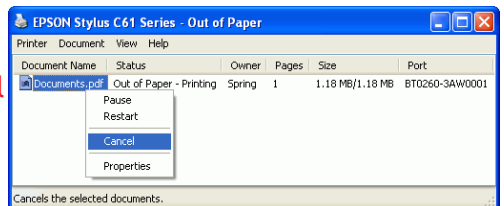
- INKs run out - Replace new INKs for your printer.
- Paper Jam - Remove jamed paper.
- Printer BUSY - Check if there is any error in feeding paper to the printer. Some printers may have problem in feeding paper. The sympton looks like Paper Empty. You can push a button on printer to let it retry. Read the printer manuals to know how to do it. If it is impossible to continue, then you have to cancel the printer job.

5. Paper empty.

If it is out of paper, this screen will pop out.



**X-Micro Combo Bluetooth Printer Adapter will continue the printing if the error condition is cleaned. It will not stop unless you cancel it.**



Example :  
Cancel an out of paper job.

You can read the following paragraphs to know how to cancel a printing job, or how to reset a Bluetooth operation.


# CANCEL PRINTING JOB

1. Start



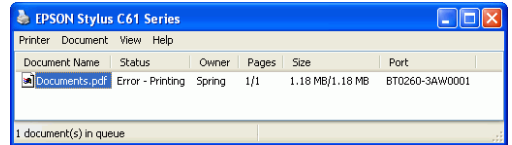
2. Printing job in process.



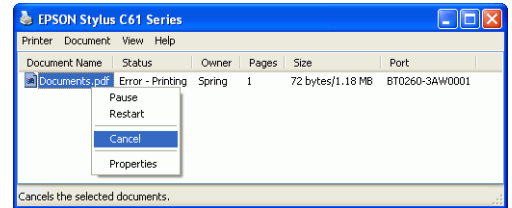
3. Printing job has error. Double click on printer icon  to read the message.



4. Error message.



5. Right click on the file being printed, and select **Cancel** to stop it.



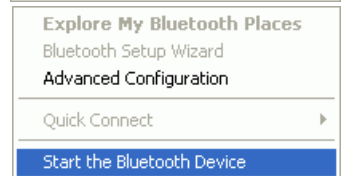
# RESET HANGED BLUETOOTH

If there is any Bluetooth operation hanged, you can use the following steps to clean it.

Right click on green Bluetooth icon on lower-right corner of your screen. Select **Stop the Bluetooth Device**.



Right click on red Bluetooth icon on lower-right corner of your screen. Select **Start the Bluetooth Device**.



Bluetooth is reset to normal condition.



## APPENDIX A

### Specifications :

Product Name	X-Micro Combo Bluetooth Printer Adapter
Model Name	XBT-PACX
Certification	FCC, CE, BQB
Standard	Bluetooth v1.1
Frequency Band	2.4~2.4835GHz unlicensed ISM band
Spread Spectrum	FHSS (Frequency Hopping Spread Spectrum)
Services Supported	SPP and HCRP print services
Data Rate	1 Mbps
RF Output Power	Class 1; 13 dBm typical
Antenna	Embedded PCB antenna
Working Distance	Up to 100 meters in free space
Sensitivity	<-88dBm at < 0.1% BER
Input Power	7.5V DC
I/O Interface	USB, IEEE-1284
LED Indicators	Power / Bluetooth active /Printing active
Operation Temperature	0 °C ~ + 60 °C
Storage Temperature	-10 °C ~ +70 °C
Humidity	5 ~ 90% non-condensing
Size	81 (L) x 54(W) x 21(H) mm

## APPENDIX B

### Safety Guide :

- Read and follow all instructions and warnings provided.
- Save these instructions for future use.
- When service or replacement of parts is required, ensure work is done by a qualified technician.
- Do not use this unit near water or in a rainy/moist environment.
- Use supplied cables only.
- Do not attempt to service this product yourself. Doing so will expose you to various hazards including dangerous voltage.
- This unit is suitable for a 110V to 230V AC power supply (Auto-detect).
- Disconnect the power cable (pull plug) and USB cable in the following situations :
  - In the event of service.
  - Power cable/plug becomes damaged.
  - Unit is exposed to excess moisture/rain
  - Unit has been dropped.
  - Unit is being cleaned.
- Unit must be used with adult supervision at all times. Children must not be allowed to handle any of the cables.
- Never insert any objects other than CDs in the trays.
- Never insert any objects through ventilation holes.

### Remember !

**Any electrical equipment is hazardous if handled improperly.**

# FCC COMPLIANCE

This device complies with Part 15 of the FCC Rules. Operation is subject to the following two conditions: (1) This device may not cause harmful interference, and (2) This device must accept any interference received, including interference that may cause undesired operation.

## Federal Communications Commission (FCC) Statement

This equipment has been tested and found to comply with the limits for a Class B digital device, pursuant to part 15 of the FCC Rules. These limits are designed to provide reasonable protection against harmful interference in a residential installation. This equipment generates, uses and can radiate radio frequency energy and, if not installed and used in accordance with the instructions, may cause harmful interference to radio communications. However, there is no guarantee that interference will not occur in a particular installation. If this equipment does cause harmful interference to radio or television reception, which can be determined by turning the equipment off and on, the user is encouraged to try to correct the interference by one or more of the following measures:

- Reorient or relocate the receiving antenna.
- Increase the separation between the equipment and the receiver.
- Connect the equipment to an outlet on a circuit different from that to which the receiver is connected.
- Consult the dealer or an experienced radio/TV technician for help.

## **Warning:**

To meet FCC requirements, a shielded power cord is required in order to prevent interference. It is essential that only the supplied power cord is to be used. Use only shielded cables to connect I/O devices to this equipment. You are cautioned that changes or modifications not approved by the party responsible for compliance could void your authority to operate the equipment.

**X-MICRO**  
*Plug & Fly*

[www.x-micro.com](http://www.x-micro.com)